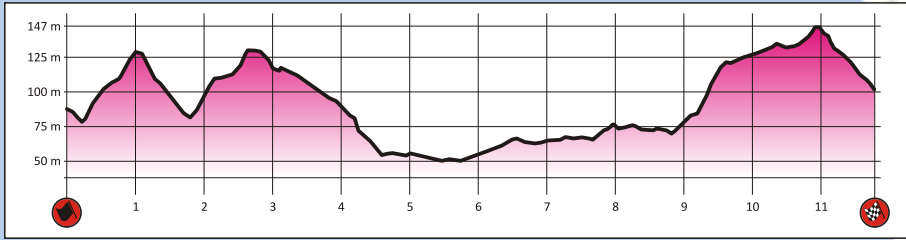


Cala Flumini SS21 PW23

Km. 11,77

SS21 h. 09:19
PW23 h. 12:08

Chiusura SS - SS Closing SS21-PW23 h. 05:19



0 Km. 1 Km. 1

Road Section Special Stage Spectator Access Spectator Area

RZ ALGERO

SS 21 - R

**Cala Flumini
 SS21 - PW23**

Km. 11,77

SS21 h.09:19 - PW23 h.12:08

Chiusura SS - SS Closing SS21- PW23 h. 05:19

Area Spettatori
 Spectators

49

Grado d'interesse:
 Degree of interest:



Visibilità:
 Visibility:

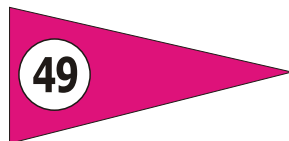


Accessi:
 Accesses:



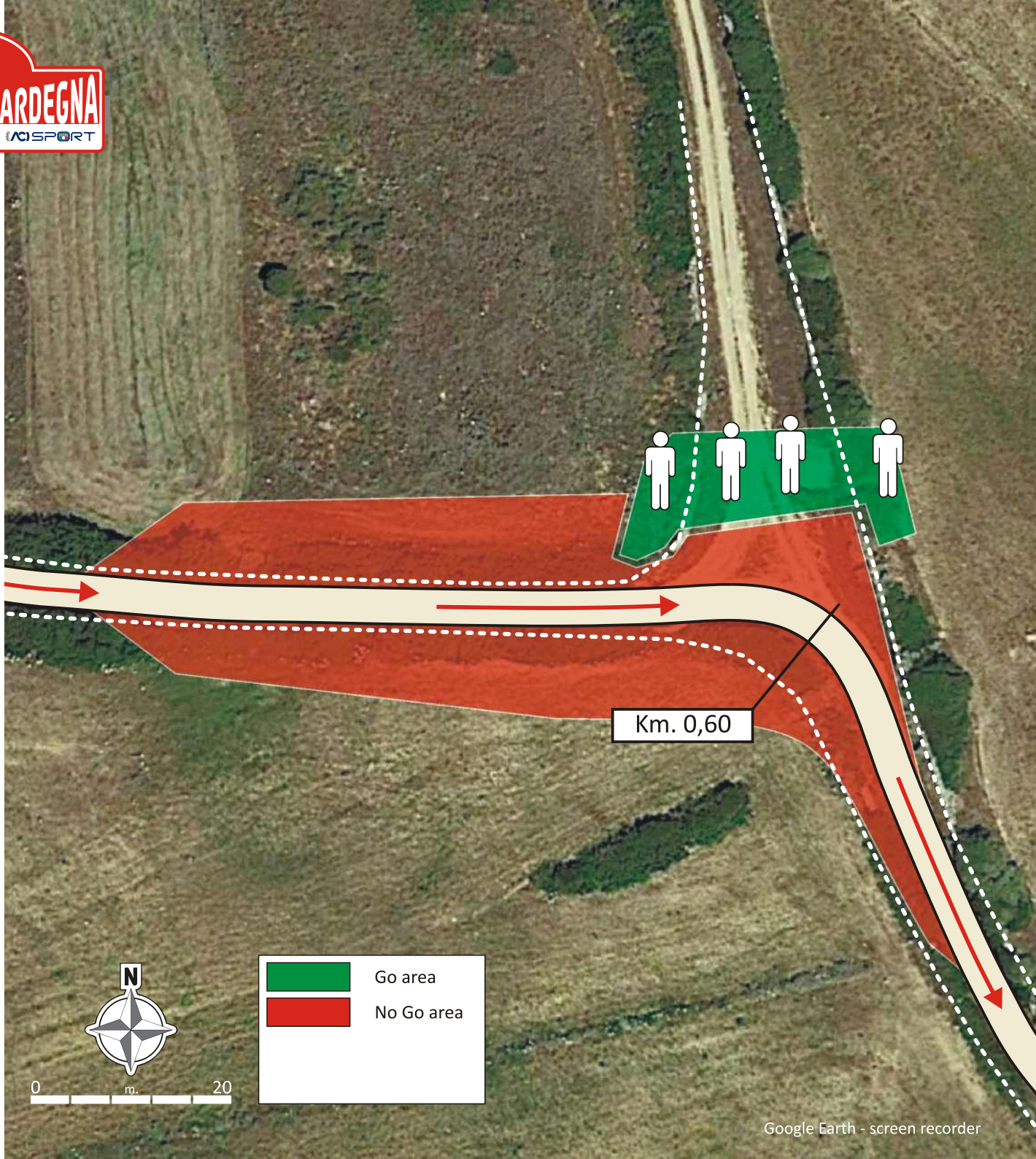
GPS: **40° 48.130'N - 8° 12.479'E**

Cartello indicatore
 su strada di accesso:
 Acces road sign:



Punto di partenza
 cartelli indicatori:
 Starting point
 road signs:

SP57 km. 10,00 da Palmadula
 SP57 km. 10,00 from Palmadula



	Go area
	No Go area

**SENZA INDICAZIONI PROSEGUIRE DRITTI
 WITHOUT INDICATIONS GO STRAIGHT**

**Cala Flumini
 SS21 - PW23**

Km. 11,77

SS21 h.09:19 - PW23 h.12:08

Chiusura SS - SS Closing SS21- PW23 h. 05:19

Area Spettatori
 Spectators



Grado d'interesse:
 Degree of interest:



Visibilità:
 Visibility:

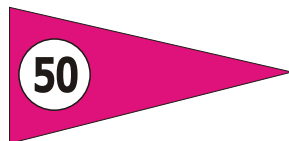


Accessi:
 Accesses:



GPS: **40° 48.065'N - 8° 12.846'E**

Cartello indicatore
 su strada di accesso:
 Acces road sign:



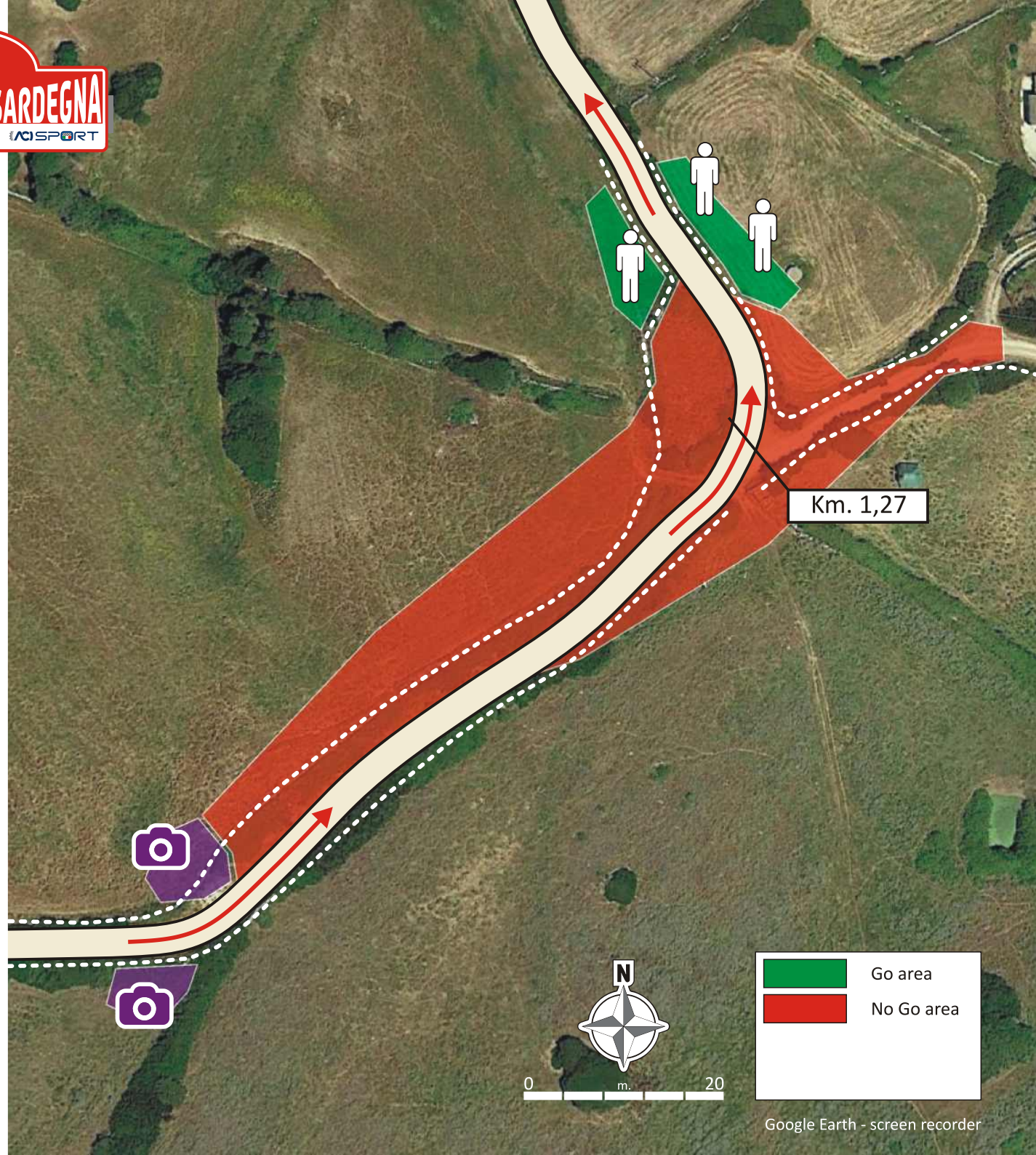
Punto di partenza
 cartelli indicatori:

SP57 km. 11,80 da Palmadula

Starting point
 road signs:

SP57 km. 11,80 from Palmadula

**SENZA INDICAZIONI PROSEGUIRE DRITTI
 WITHOUT INDICATIONS GO STRAIGHT**



	Go area
	No Go area



0 m. 20

Cala Flumini SS21 - PW23

Km. 11,77

SS21 h.09:19 - PW23 h.12:08

Chiusura SS - SS Closing SS21- PW23 h. 05:19

Area Spettatori
Spectators



Grado d'interesse:
Degree of interest:



Visibilità:
Visibility:

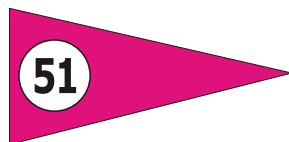


Accessi:
Accesses:

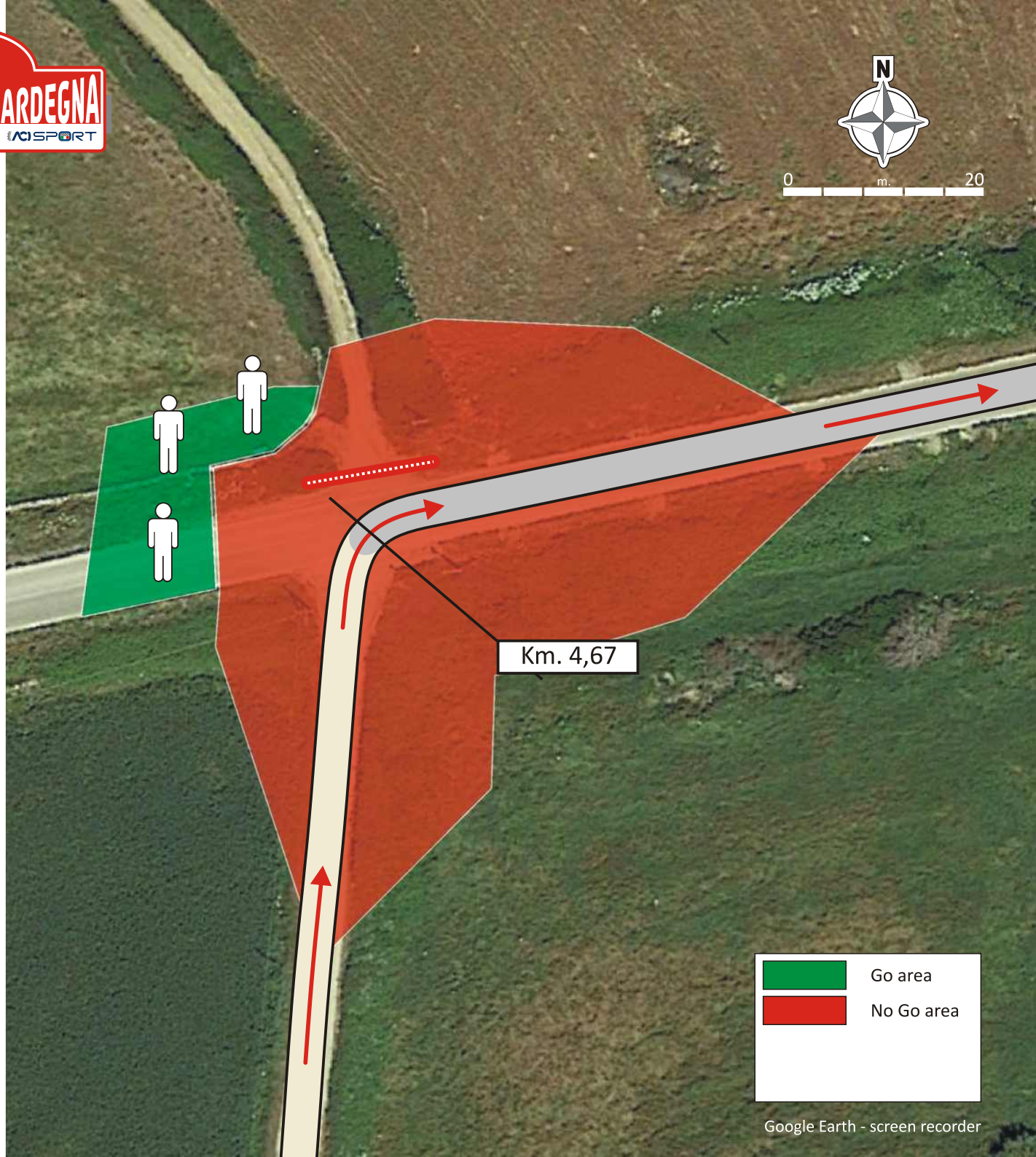


GPS: 40° 49.389'N - 8° 12.047'E

Cartello indicatore
su strada di accesso:
Access road sign:



Punto di partenza
cartelli indicatori:
Starting point
road signs:
SP57 km. 9,60 da Palmadula
SP57 km. 9,60 from Palmadula



	Go area
	No Go area

**SENZA INDICAZIONI PROSEGUIRE DRITTI
WITHOUT INDICATIONS GO STRAIGHT**

**Cala Flumini
SS21 - PW23**

Km. 11,77

SS21 h.09:19 - PW23 h.12:08

Chiusura SS - SS Closing SS21- PW23 h. 05:19

Area Spettatori
Spectators



Grado d'interesse:
Degree of interest:



Visibilità:
Visibility:

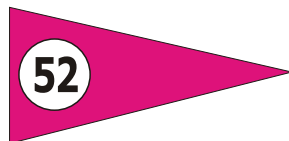


Accessi:
Accesses:



GPS: 40° 49.608'N - 8° 12.670'E

Cartello indicatore
su strada di accesso:
Access road sign:

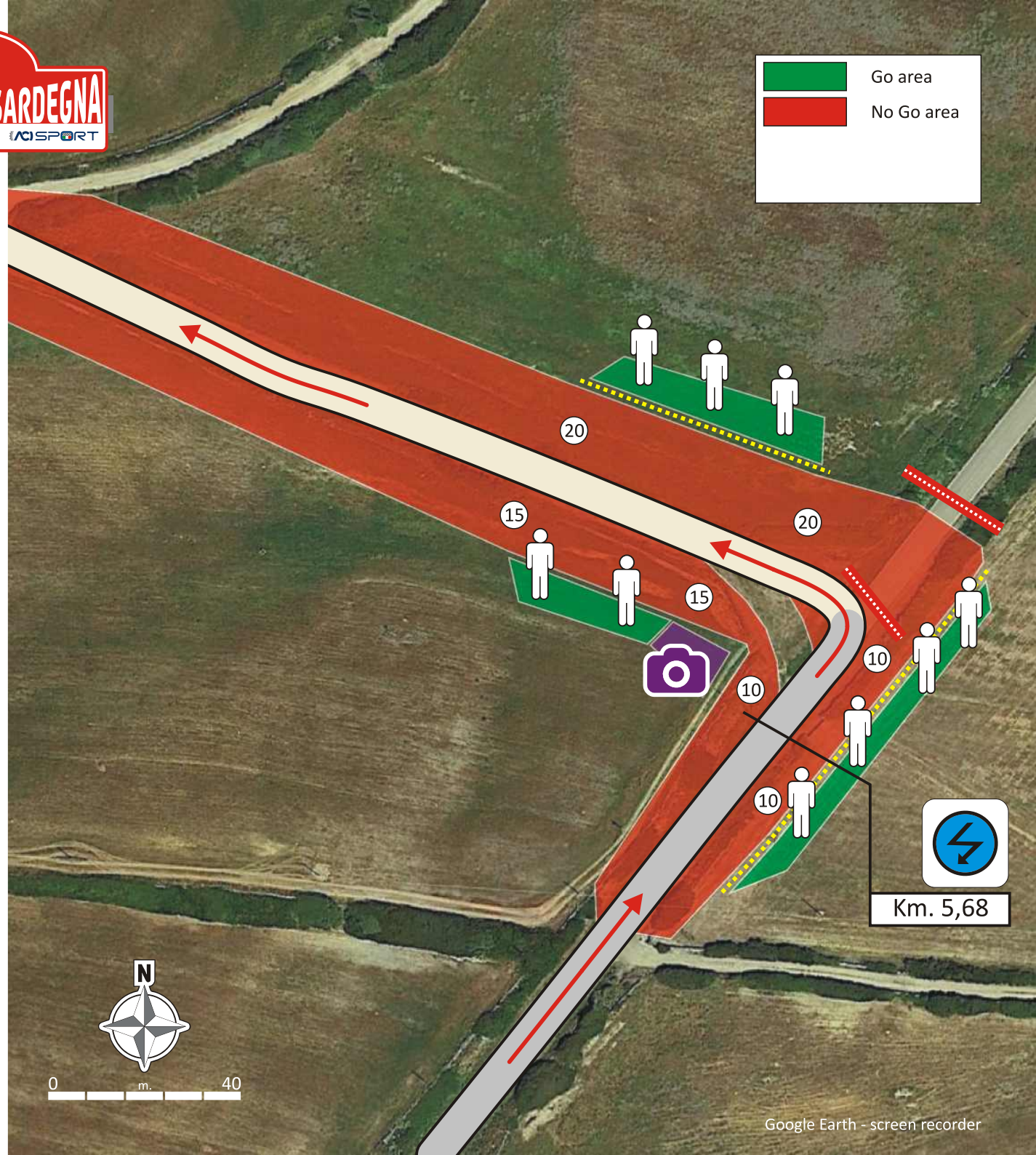


Punto di partenza
cartelli indicatori:
Starting point
road signs:

Pozzo San Nicola da rotatoria su
SP 57 in direzione Palmadula
Pozzo San Nicola from
roundabout on SP57 towards
Palmadula

**SENZA INDICAZIONI PROSEGUIRE DRITTI
WITHOUT INDICATIONS GO STRAIGHT**

Go area
No Go area



**Cala Flumini
 SS21 - PW23**

Km. 11,77

SS21 h.09:19 - PW23 h.12:08

Chiusura SS - SS Closing SS21- PW23 h. 05:19

Area Spettatori
 Spectators

53

Grado d'interesse:
 Degree of interest:



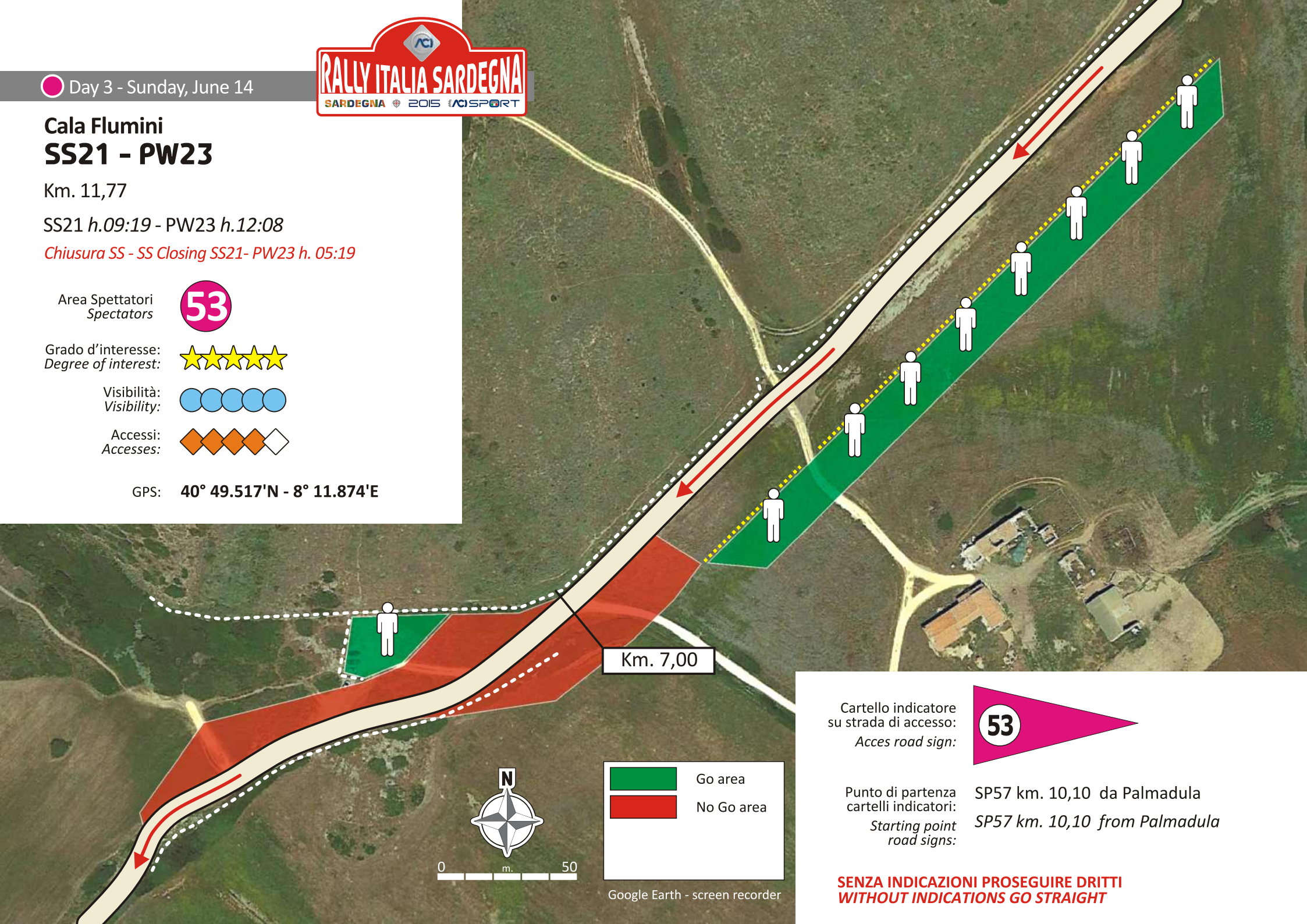
Visibilità:
 Visibility:



Accessi:
 Accesses:



GPS: **40° 49.517'N - 8° 11.874'E**



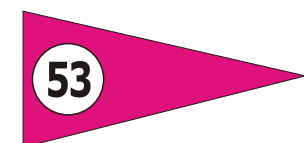
Km. 7,00

	Go area
	No Go area



Google Earth - screen recorder

Cartello indicatore
 su strada di accesso:
 Acces road sign:



Punto di partenza
 cartelli indicatori:
 Starting point
 road signs:

SP57 km. 10,10 da Palmadula
 SP57 km. 10,10 from Palmadula

**SENZA INDICAZIONI PROSEGUIRE DRITTI
 WITHOUT INDICATIONS GO STRAIGHT**

Day 3 - Sunday, June 14



Cala Flumini SS21 - PW23

Km. 11,77

SS21 h.09:19 - PW23 h.12:08

Chiusura SS - SS Closing SS21- PW23 h. 05:19

Area Spettatori
Spectators

54

Grado d'interesse:
Degree of interest:



Visibilità:
Visibility:

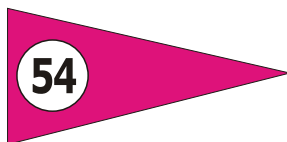


Accessi:
Accesses:



GPS: 40° 48.699'N - 8° 11.621'E

Cartello indicatore
su strada di accesso:
Access road sign:



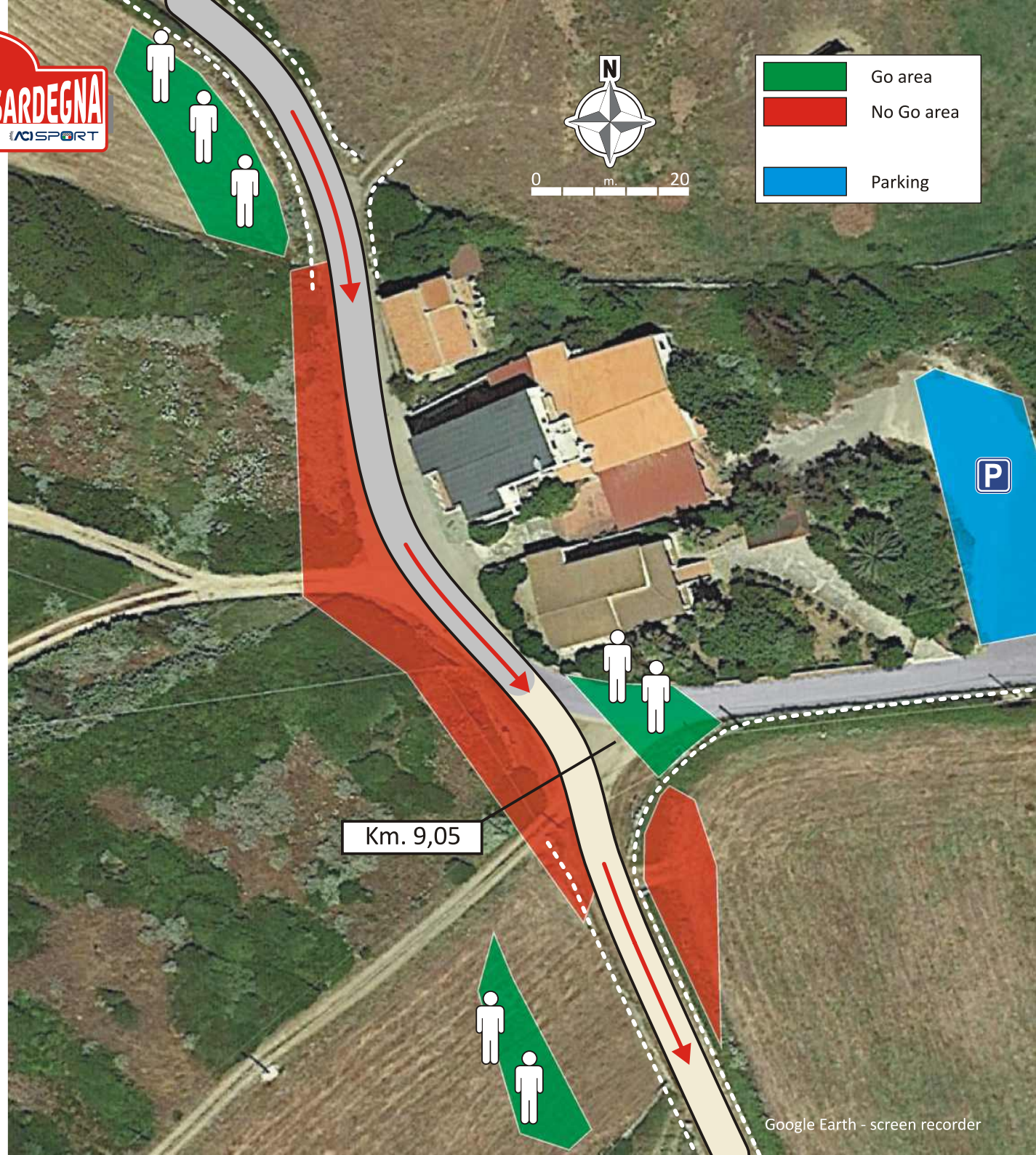
Punto di partenza
cartelli indicatori:

SP57 km. 8,40 da Palmadula

Starting point
road signs:

SP57 km. 8,40 from Palmadula

SENZA INDICAZIONI PROSEGUIRE DRITTI
WITHOUT INDICATIONS GO STRAIGHT



**Cala Flumini
 SS21 - PW23**

Km. 11,77

SS21 h.09:19 - PW23 h.12:08

Chiusura SS - SS Closing SS21- PW23 h. 05:19

Area Spettatori
 Spectators



Grado d'interesse:
 Degree of interest:



Visibilità:
 Visibility:

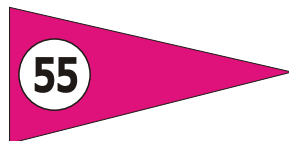


Accessi:
 Accesses:



GPS: **40° 48.520'N - 8° 11.628'E**

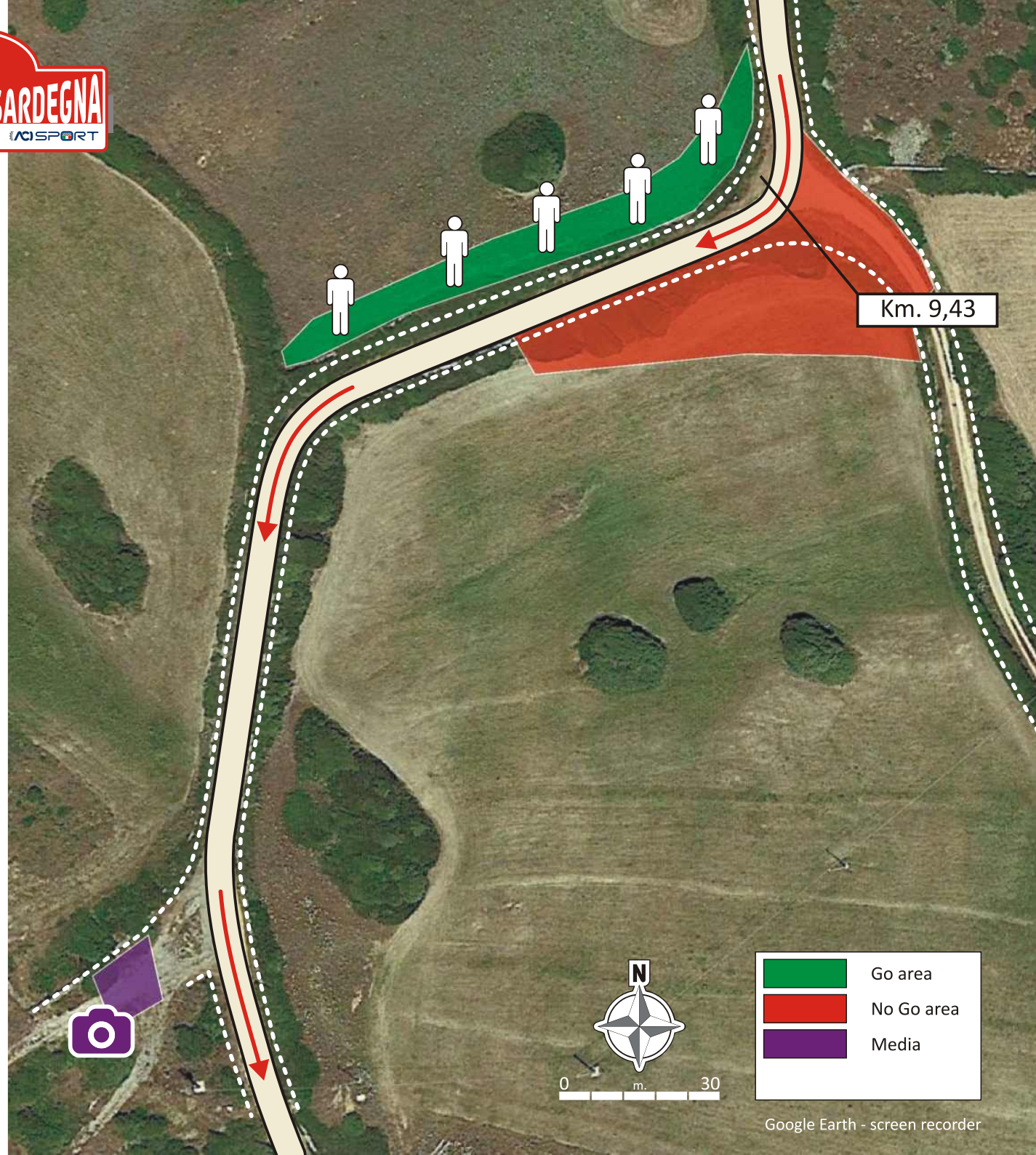
Cartello indicatore
 su strada di accesso:
 Acces road sign:



Punto di partenza
 cartelli indicatori:
 Starting point
 road signs:

SP57 km. 7,80 da Palmadula

SP57 km. 7,80 from Palmadula



	Go area
	No Go area
	Media

**SENZA INDICAZIONI PROSEGUIRE DRITTI
 WITHOUT INDICATIONS GO STRAIGHT**

Day 3 - Sunday, June 14



Cala Flumini SS21 - PW23

Km. 11,77

SS21 h.09:19 - PW23 h.12:08

Chiusura SS - SS Closing SS21- PW23 h. 05:19

Area Spettatori
Spectators

56

Grado d'interesse:
Degree of interest:



Visibilità:
Visibility:

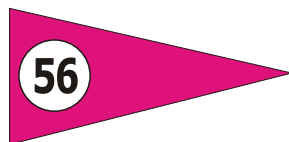


Accessi:
Accesses:



GPS: 40° 48.285'N - 8° 11.491'E

Cartello indicatore
su strada di accesso:
Access road sign:

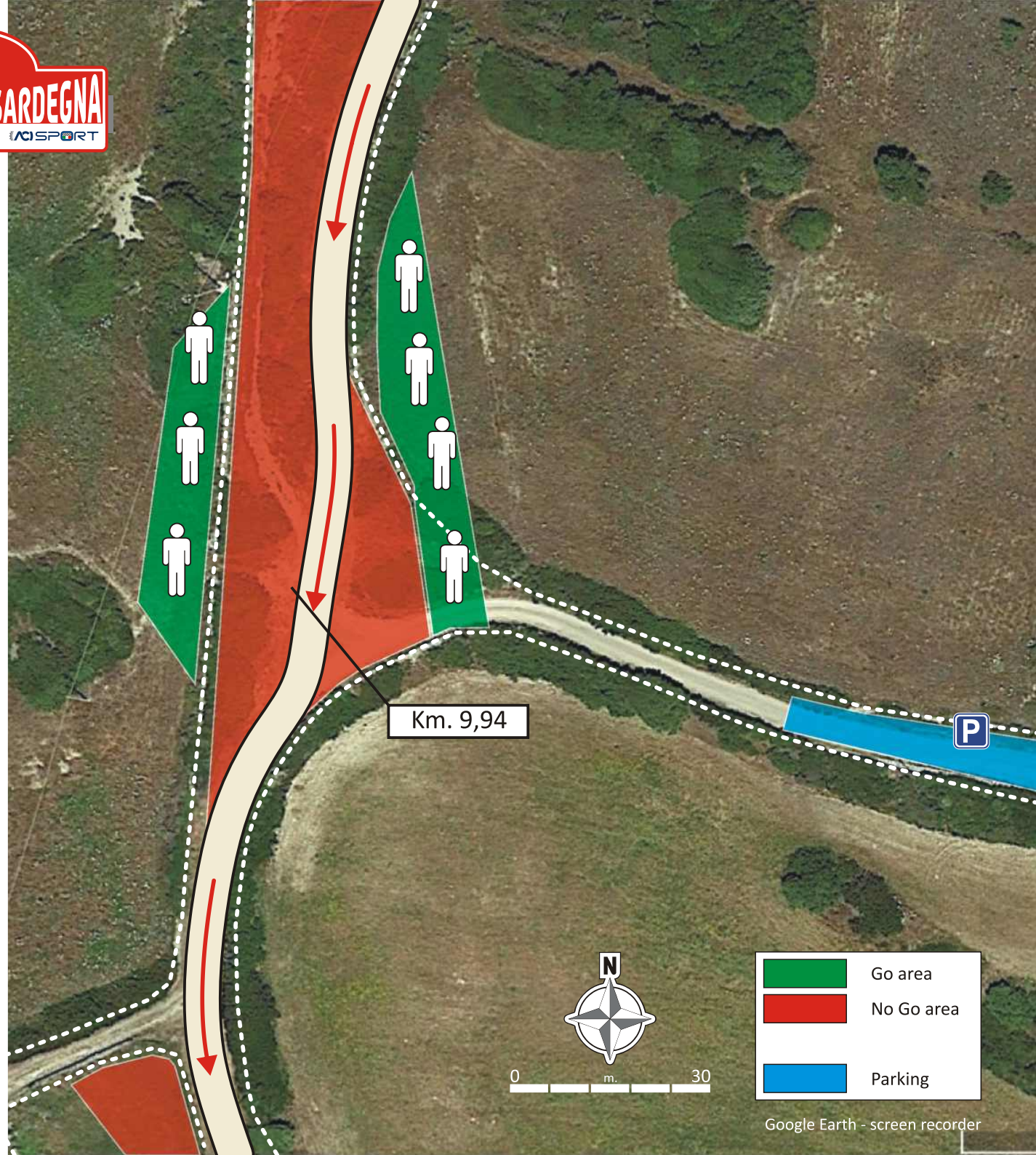


Punto di partenza
cartelli indicatori:
Starting point
road signs:

SP57 km. 7,60 da Palmadula

SP57 km. 7,60 from Palmadula

**SENZA INDICAZIONI PROSEGUIRE DRITTI
WITHOUT INDICATIONS GO STRAIGHT**



	Go area
	No Go area
	Parking

**Cala Flumini
SS21 - PW23**

Km. 11,77

SS21 h.09:19 - PW23 h.12:08

Chiusura SS - SS Closing SS21- PW23 h. 05:19

Area Spettatori
Spectators



Grado d'interesse:
Degree of interest:



Visibilità:
Visibility:

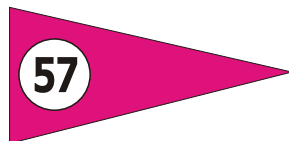


Accessi:
Accesses:



GPS: **40° 47.928'N - 8° 11.220'E**

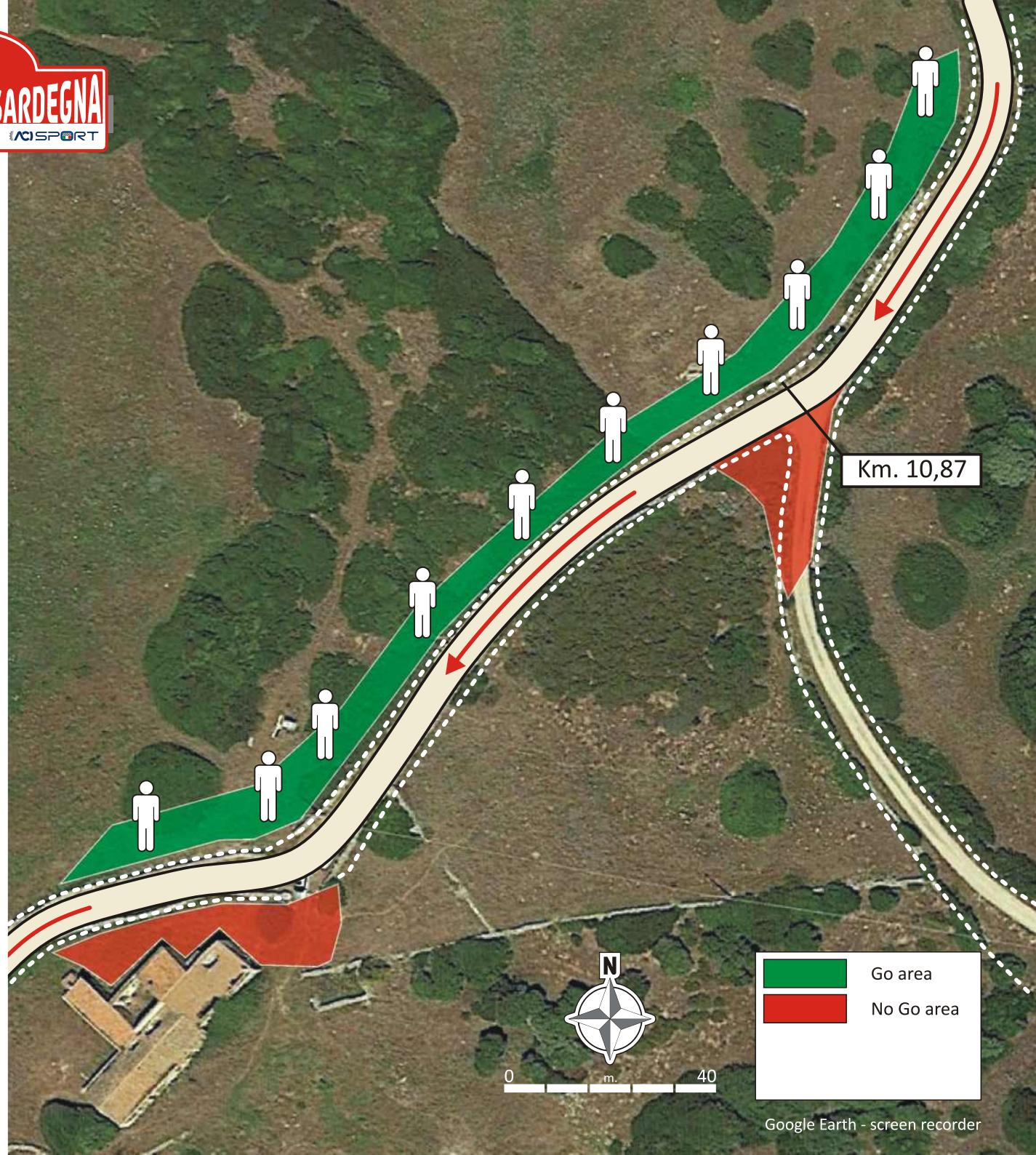
Cartello indicatore
su strada di accesso:
Access road sign:



Punto di partenza
cartelli indicatori:
Starting point
road signs:

SP57 km. 7,60 da Palmadula

SP57 km. 7,60 from Palmadula



Km. 10,87

	Go area
	No Go area

**SENZA INDICAZIONI PROSEGUIRE DRITTI
WITHOUT INDICATIONS GO STRAIGHT**