

DAY2 Saturday, June 13
Monte Lerno
SS14-19
 Km. 42,22
 SS14 h. 10:39
 SS19 h. 18:54
 Chiusura SS - SS Closing SS13 h. 06:39 - SS19 h. 15:54



Road Section
 Special Stage
 Spectator Access
 Spectator Area

BUDDUSÒ

SP10M

Day 2 - Saturday, June 13



Monte Lerno SS14-19

Km. 42,22

SS14 h.10:39 - SS19 h.18:54

Chiusura SS - SS Closing SS14 h. 06:39 - SS19 h. 15:54

Area Spettatori
Spectators



Grado d'interesse:
Degree of interest:



Visibilità:
Visibility:

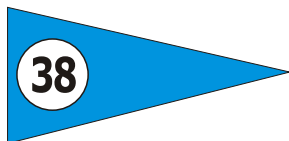


Accessi:
Accesses:

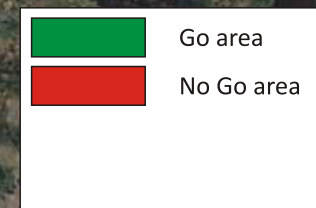
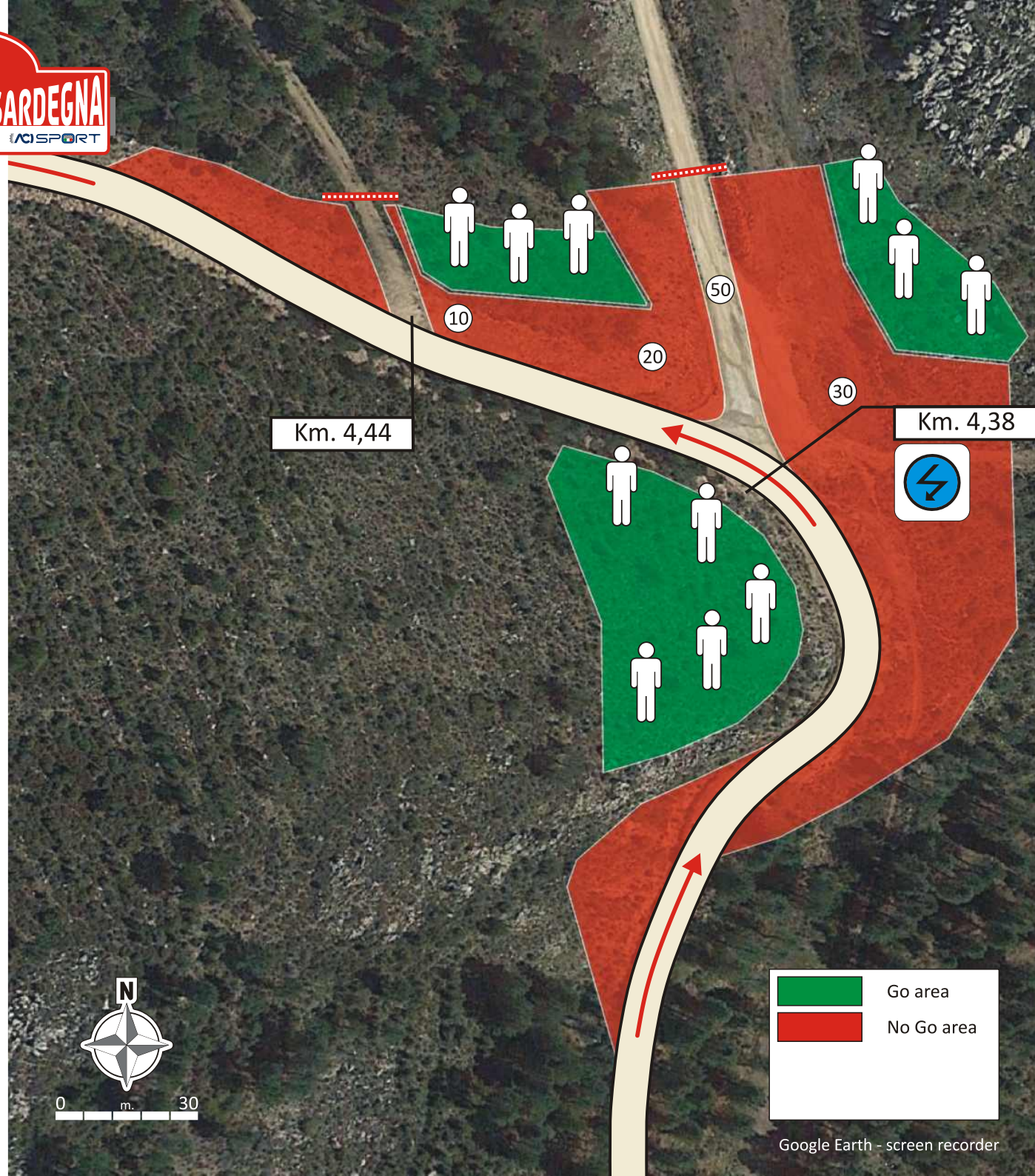


GPS: 40° 37.897'N - 9° 13.317'E

Cartello indicatore
su strada di accesso:
Access road sign:



Punto di partenza
cartelli indicatori:
Starting point
road signs:
SS389 km. 0,70 da SP10 verso
Buddusò
SS389 km. 0,70 from SP10 to
Buddusò



**SENZA INDICAZIONI PROSEGUIRE DRITTI
WITHOUT INDICATIONS GO STRAIGHT**

**Monte Lerno
 SS14-19**

Km. 42,22

SS14 h.10:39 - SS19 h.18:54

Chiusura SS - SS Closing SS14 h. 06:39 - SS19 h. 15:54

Area Spettatori
 Spectators



Grado d'interesse:
 Degree of interest:



Visibilità:
 Visibility:

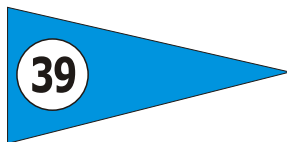


Accessi:
 Accesses:

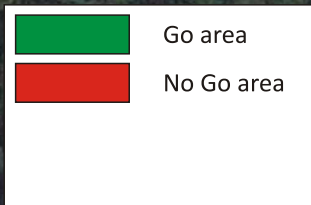
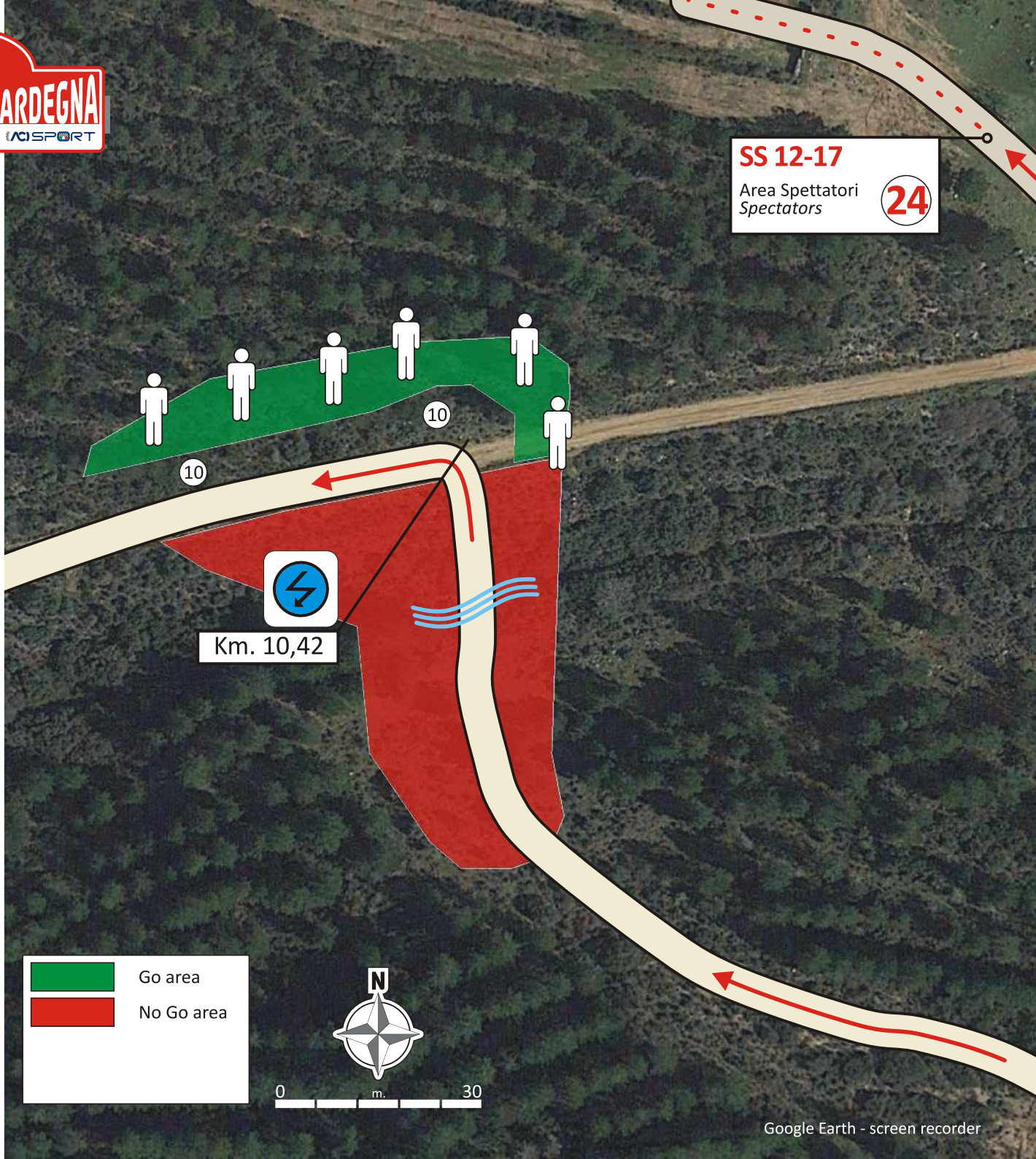


GPS: 40° 38.773'N - 9° 12.569'E

Cartello indicatore
 su strada di accesso:
 Acces road sign:



Punto di partenza
 cartelli indicatori:
 Starting point
 road signs:
 SS389 km. 0,70 da SP10 verso
 Buddusò
 SS389 km. 0,70 from SP10 to
 Buddusò



**SENZA INDICAZIONI PROSEGUIRE DRITTI
 WITHOUT INDICATIONS GO STRAIGHT**

Day 2 - Saturday, June 13



0 m 20

Monte Lerno SS14-19

Km. 42,22

SS14 h.10:39 - SS19 h.18:54

Chiusura SS - SS Closing SS14 h. 06:39 - SS19 h. 15:54

Area Spettatori
Spectators



Grado d'interesse:
Degree of interest:



Visibilità:
Visibility:

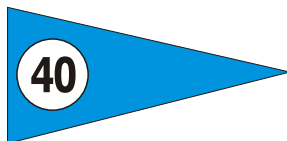


Accessi:
Accesses:



GPS: 40° 37.004'N - 9° 11.134'E

Cartello indicatore
su strada di accesso:
Access road sign:



Punto di partenza
cartelli indicatori:
Starting point
road signs:
SS389dir/A km. 5,20 da Buddusò
Ss389dir/A km. 5,20 from
Buddusò



SENZA INDICAZIONI PROSEGUIRE DRITTI
WITHOUT INDICATIONS GO STRAIGHT

Day 2 - Saturday, June 13



Monte Lerno SS14-19

Km. 42,22

SS14 h.10:39 - SS19 h.18:54

Chiusura SS - SS Closing SS14 h. 06:39 - SS19 h. 15:54

Area Spettatori
Spectators

41

Grado d'interesse:
Degree of interest:



Visibilità:
Visibility:

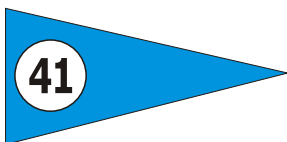


Accessi:
Accesses:



GPS: 40° 37.242'N - 9° 12.657'E

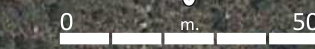
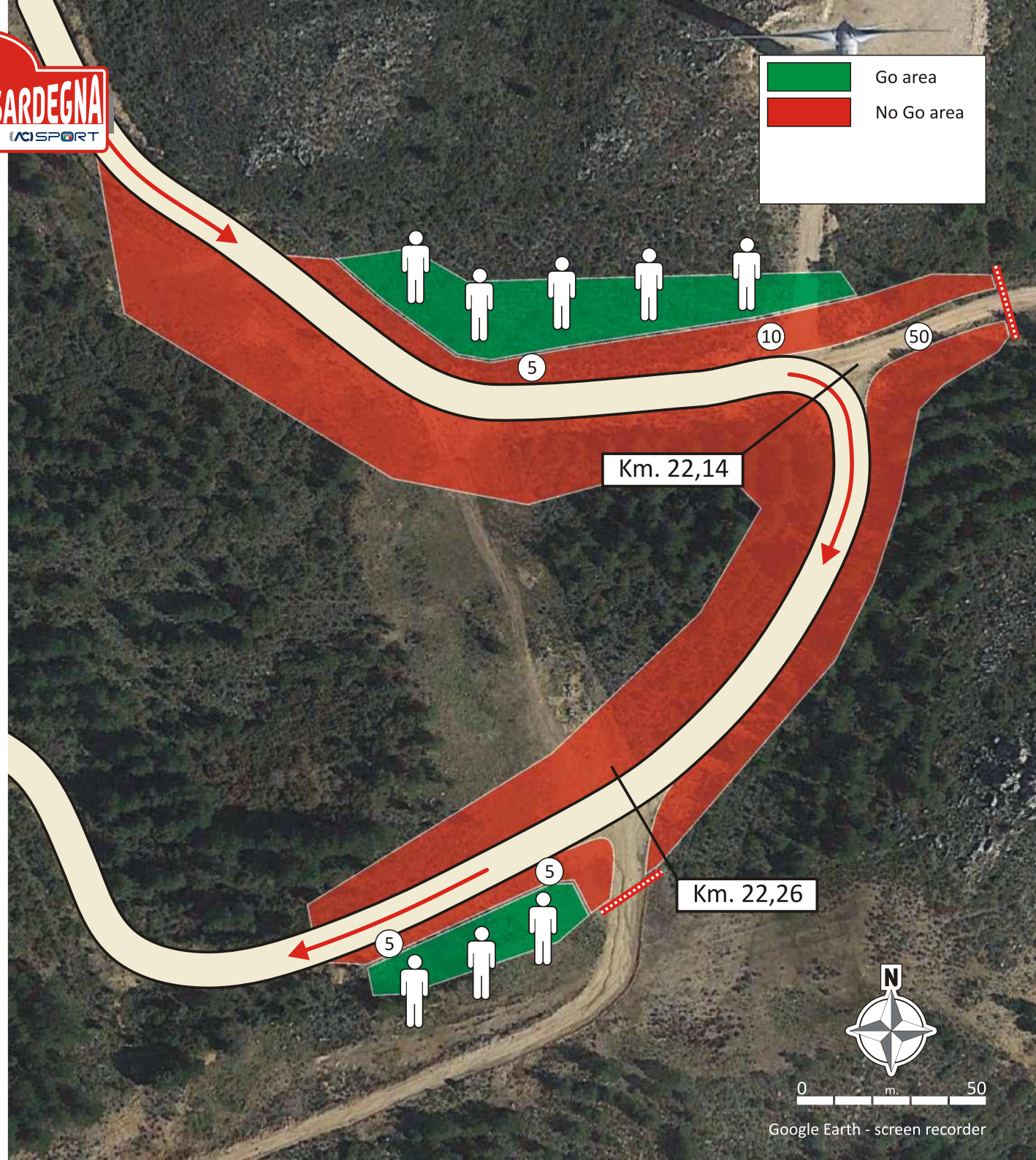
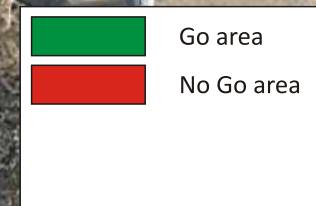
Cartello indicatore
su strada di accesso:
Access road sign:



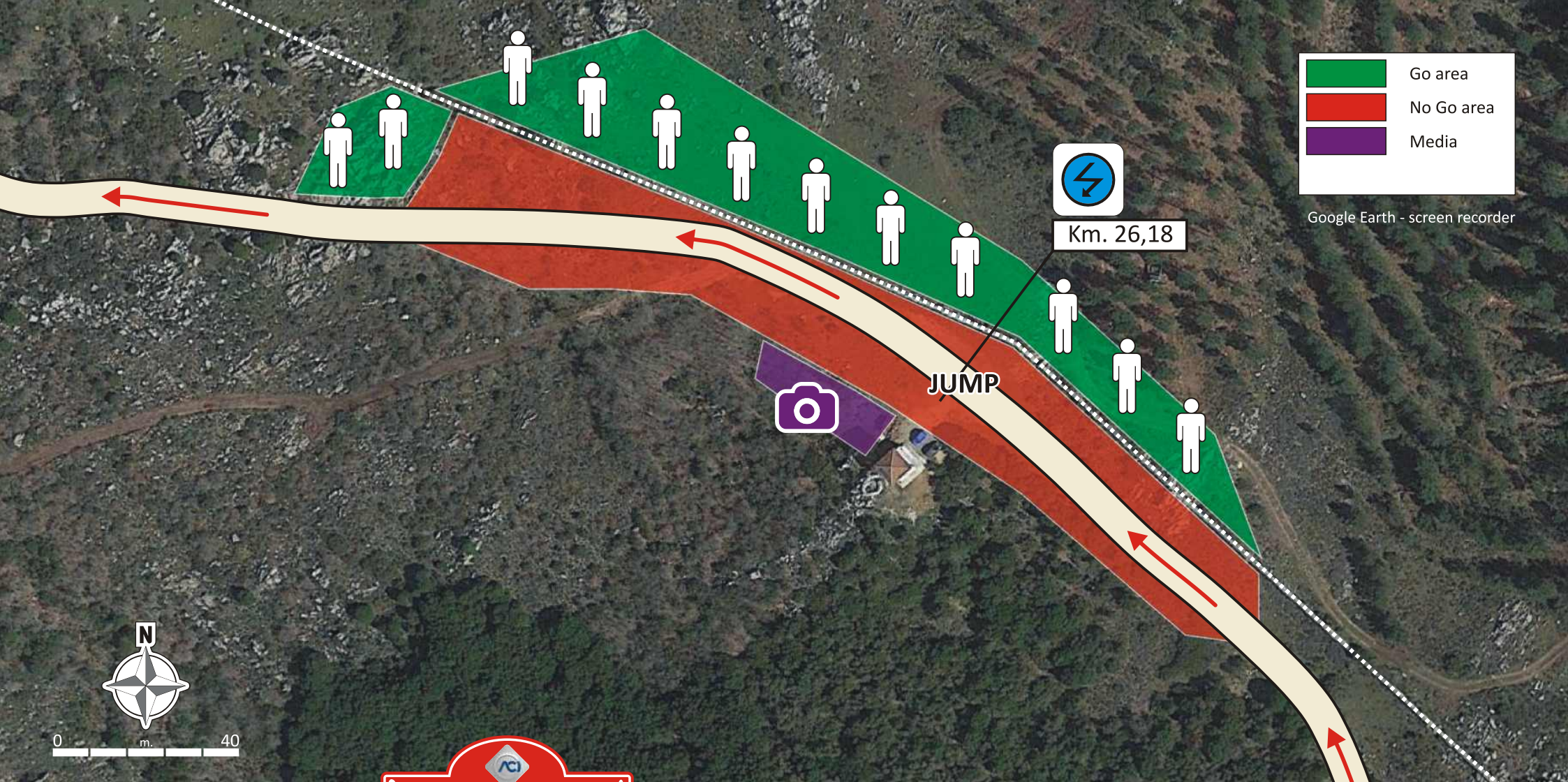
Punto di partenza
cartelli indicatori:
Starting point
road signs:

SS389dir/A km. 5,20 da Buddusò
Ss389dir/A km. 5,20 from
Buddusò

SENZA INDICAZIONI PROSEGUIRE DRITTI
WITHOUT INDICATIONS GO STRAIGHT



Google Earth - screen recorder



Go area
 No Go area
 Media

Google Earth - screen recorder



Km. 26,18



JUMP



0 m. 40



Day 2 - Saturday, June 13

Monte Lerno SS14-19

Km. 42,22

SS14 h.10:39 - SS19 h.18:54

Chiusura SS - SS Closing SS14 h. 06:39 - SS19 h. 15:54

Area Spettatori
Spectators

42

Grado d'interesse:
Degree of interest:



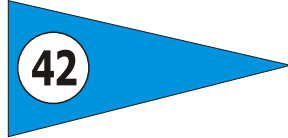
Visibilità:
Visibility:



Accessi:
Accesses:



Cartello indicatore
su strada di accesso:
Acces road sign:



Punto di partenza
cartelli indicatori:
Starting point
road signs:

SS389dir/A km. 5,20 da Buddusò
Ss389dir/A km. 5,20 from
Buddusò

GPS: 40° 36.233'N - 9° 10.725'E

SENZA INDICAZIONI PROSEGUIRE DRITTI - WITHOUT INDICATIONS GO STRAIGHT

Monte Lerno SS14-19

Km. 42,22

SS14 h.10:39 - SS19 h.18:54

Chiusura SS - SS Closing SS14 h. 06:39 - SS19 h. 15:54

Area Spettatori
Spectators

43

Grado d'interesse:
Degree of interest:



Visibilità:
Visibility:

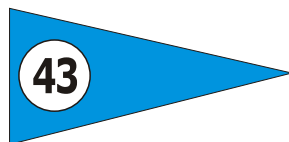


Accessi:
Accesses:



GPS: **40° 39.551'N - 9° 10.492'E**

Cartello indicatore
su strada di accesso:
Access road sign:



Punto di partenza
cartelli indicatori:
Starting point
road signs:

SS199 km. 2,40 da Oschiri
SP199 km. 2,40 from Oschiri

**SENZA INDICAZIONI PROSEGUIRE DRITTI
WITHOUT INDICATIONS GO STRAIGHT**

