

SS14-19



RZ BUDDUSÒ



DAY2 Saturday, June 13
Monti di Alà
SS12-17
 Km. 22,49
 SS12 h. 08:47
 SS17 h. 16:56
Chiusura SS - SS Closing SS12 h. 04:47 - SS17 h. 13:56

0 Km. Km. 1
 Road Section Special Stage Spectator Access Spectator Area

Day 2 - Saturday, June 13



Monti di Alà SS12-17

Km. 22,49

SS12 - h.08:47 - SS17 h.16:56

Chiusura SS - SS Closing SS12 h. 04:47 - SS17 h. 13:56

Area Spettatori
Spectators



Grado d'interesse:
Degree of interest:



Visibilità:
Visibility:

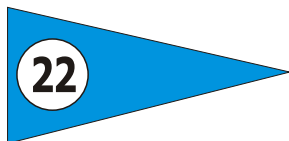


Accessi:
Accesses:



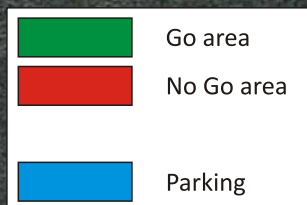
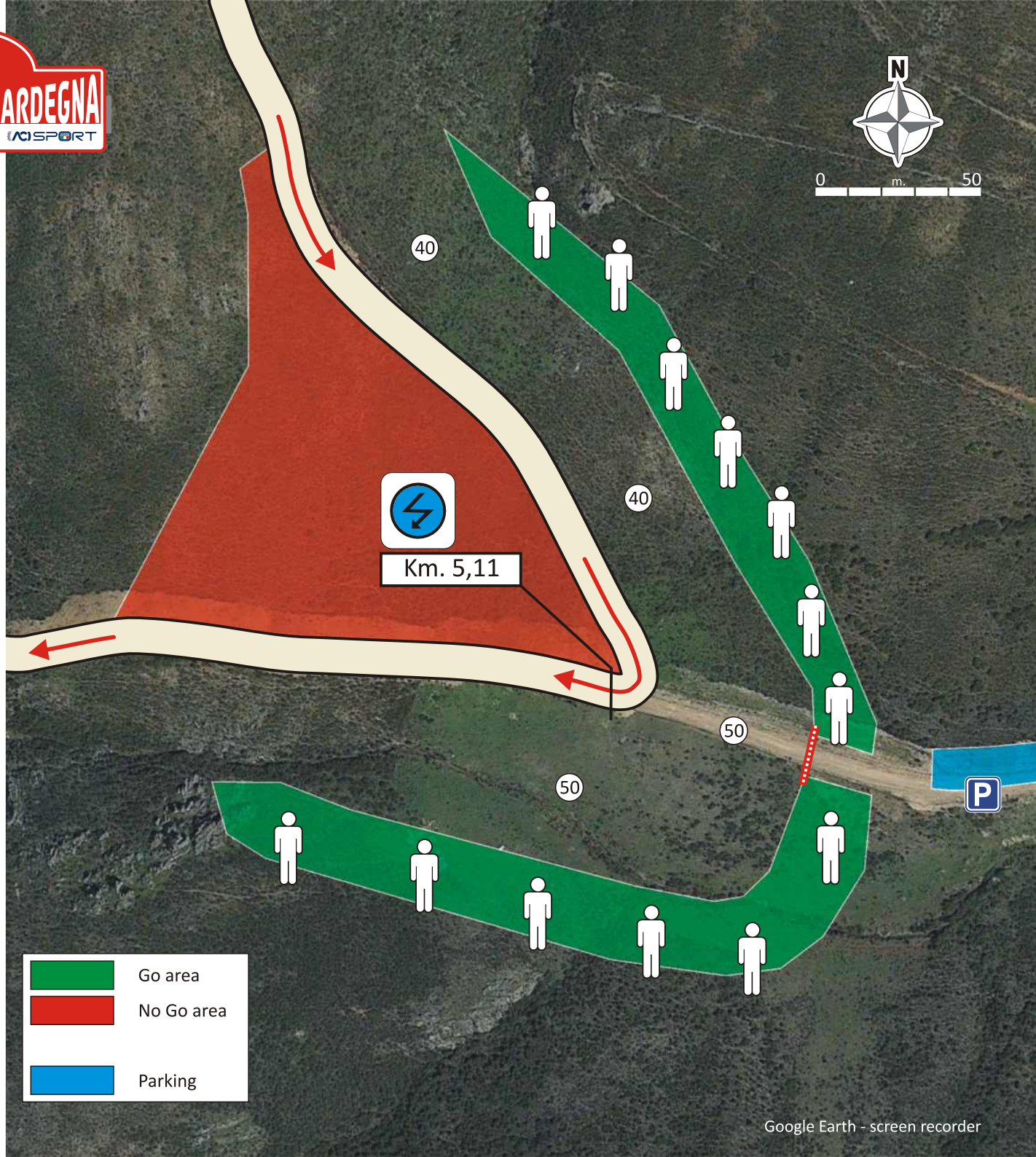
GPS: **40° 38.823'N - 9° 15.145'E**

Cartello indicatore
su strada di accesso:
Access road sign:



Punto di partenza
cartelli indicatori:
Starting point
road signs:
SS389 km. 0,70 da SP10 verso
Buddusò
SS389 km. 0,70 from SP10 to
Buddusò

**SENZA INDICAZIONI PROSEGUIRE DRITTI
WITHOUT INDICATIONS GO STRAIGHT**



Monti di Alà SS12-17

Km. 22,49

SS12 - h.08:47 - SS17 h.16:56

Chiusura SS - SS Closing SS12 h. 04:47 - SS17 h. 13:56

Area Spettatori
Spectators

23

Grado d'interesse:
Degree of interest:



Visibilità:
Visibility:

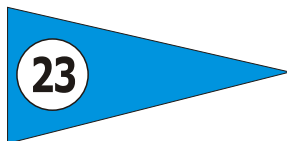


Accessi:
Accesses:

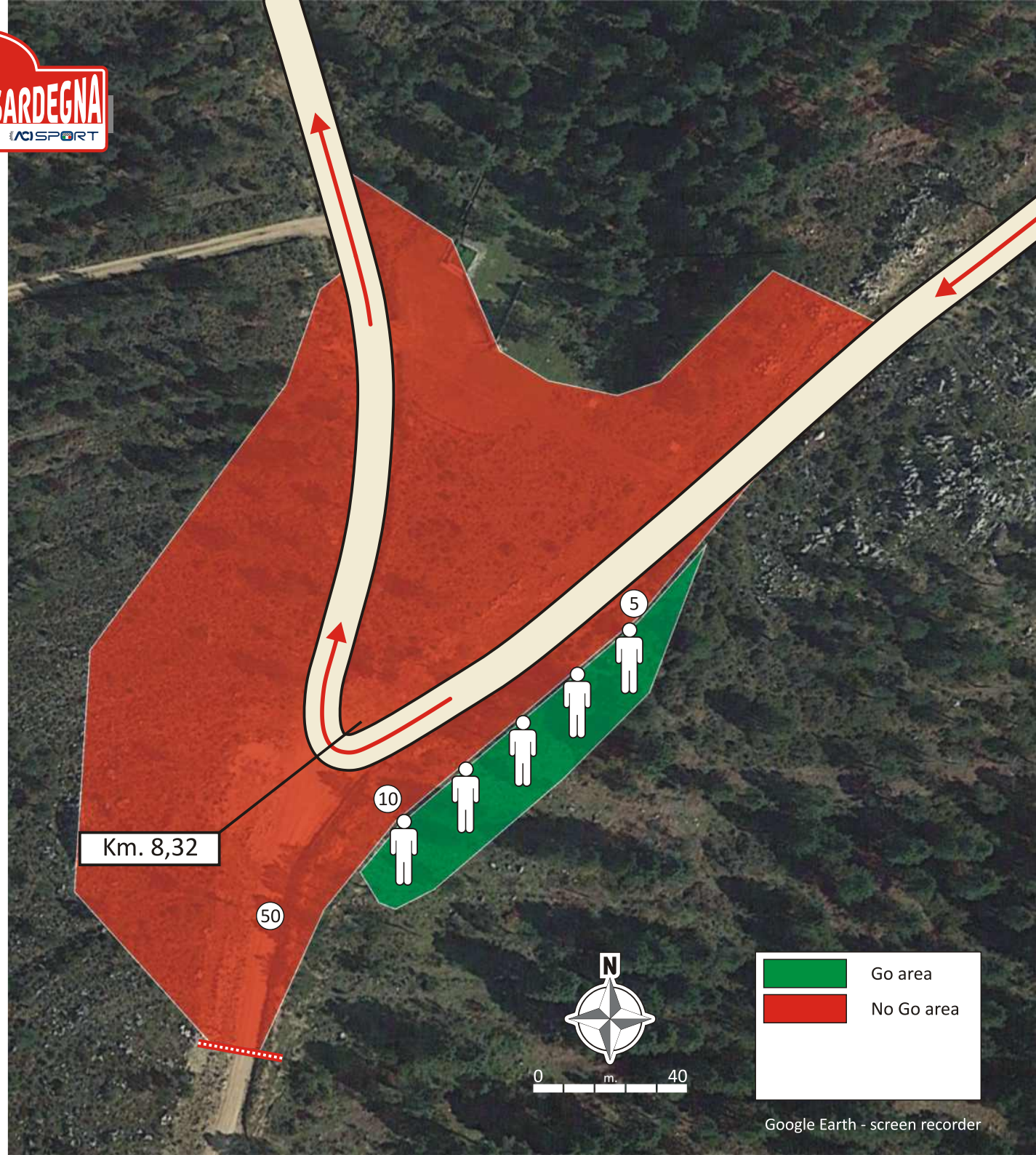


GPS: 40° 38.208'N - 9° 13.351'E

Cartello indicatore
su strada di accesso:
Access road sign:

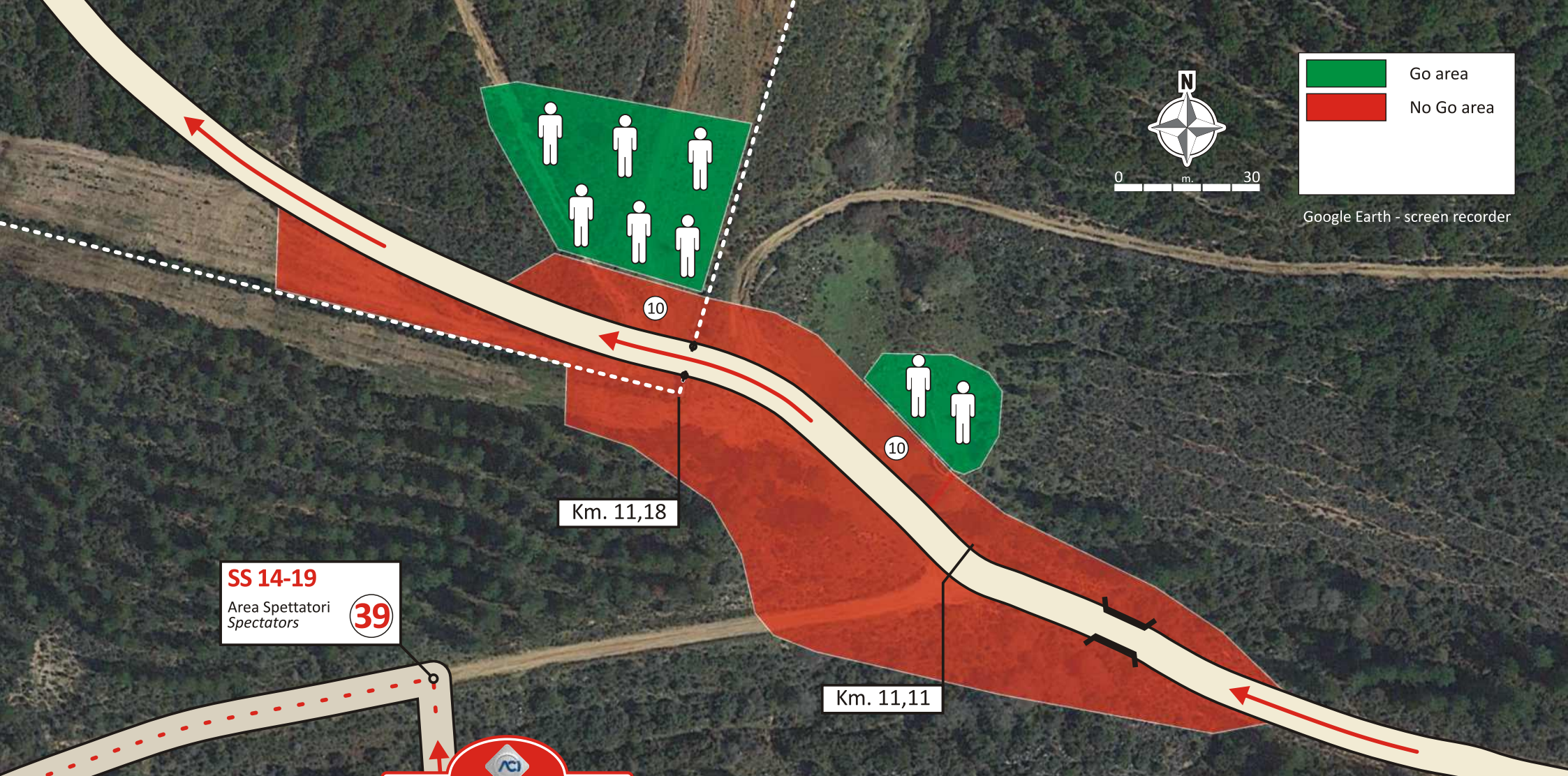


Punto di partenza
cartelli indicatori:
Starting point
road signs:
SS389 km. 0,70 da SP10 verso
Buddusò
SS389 km. 0,70 from SP10 to
Buddusò



SENZA INDICAZIONI PROSEGUIRE DRITTI
WITHOUT INDICATIONS GO STRAIGHT

Go area
No Go area



Go area
 No Go area



Google Earth - screen recorder

SS 14-19
Area Spettatori
Spectators **39**

Km. 11,18

Km. 11,11



Day 2 - Saturday, June 13

Monti di Alà SS12-17

Km. 22,49

SS12 - h.08:47 - SS17 h.16:56

Chiusura SS - SS Closing SS12 h. 04:47 - SS17 h. 13:56

Area Spettatori
Spectators

24

Grado d'interesse:
Degree of interest:



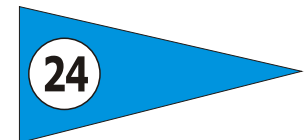
Visibilità:
Visibility:



Accessi:
Accesses:



Cartello indicatore
su strada di accesso:
Acces road sign:



Punto di partenza
cartelli indicatori:
Starting point
road signs:

SS389 km. 0,70 da SP10 verso
Buddusò
SS389 km. 0,70 from SP10 to
Buddusò

GPS: **40° 38.811'N - 9° 12.608'E**

SENZA INDICAZIONI PROSEGUIRE DRITTI - WITHOUT INDICATIONS GO STRAIGHT

**Monti di Alà
 SS12-17**

Km. 22,49

SS12 - h.08:47 - SS17 h.16:56

Chiusura SS - SS Closing SS12 h. 04:47 - SS17 h. 13:56

Area Spettatori
 Spectators



Grado d'interesse:
 Degree of interest:



Visibilità:
 Visibility:

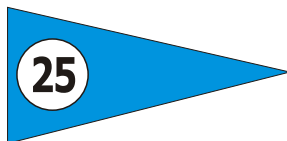


Accessi:
 Accesses:



GPS: **40° 39.308'N - 9° 12.820'E**

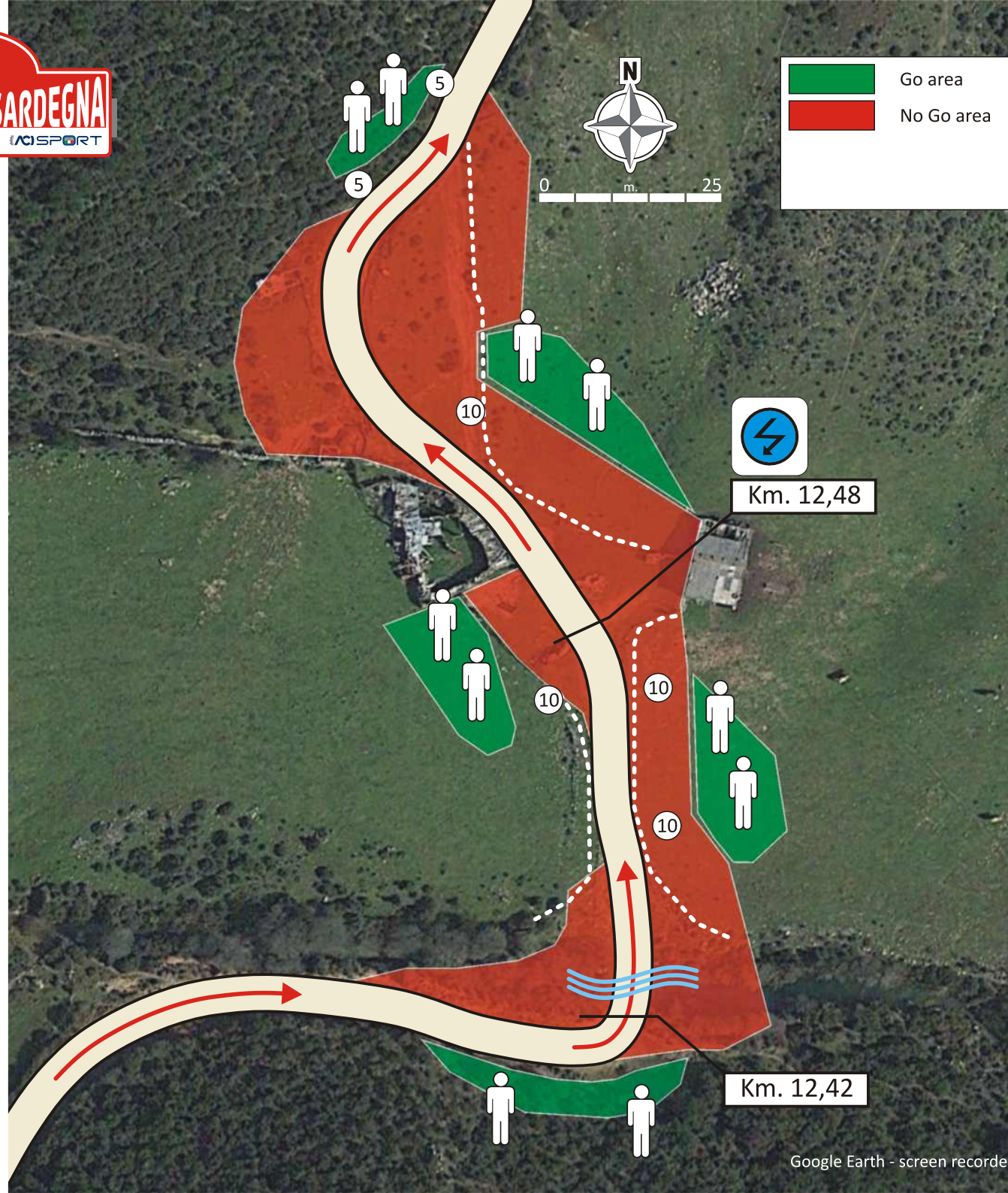
Cartello indicatore
 su strada di accesso:
 Acces road sign:



Punto di partenza
 cartelli indicatori:
 Starting point
 road signs:

SS389 km. 0,70 da SP10 verso
 Buddusò
 SS389 km. 0,70 from SP10 to
 Buddusò



**SENZA INDICAZIONI PROSEGUIRE DRITTI
 WITHOUT INDICATIONS GO STRAIGHT**

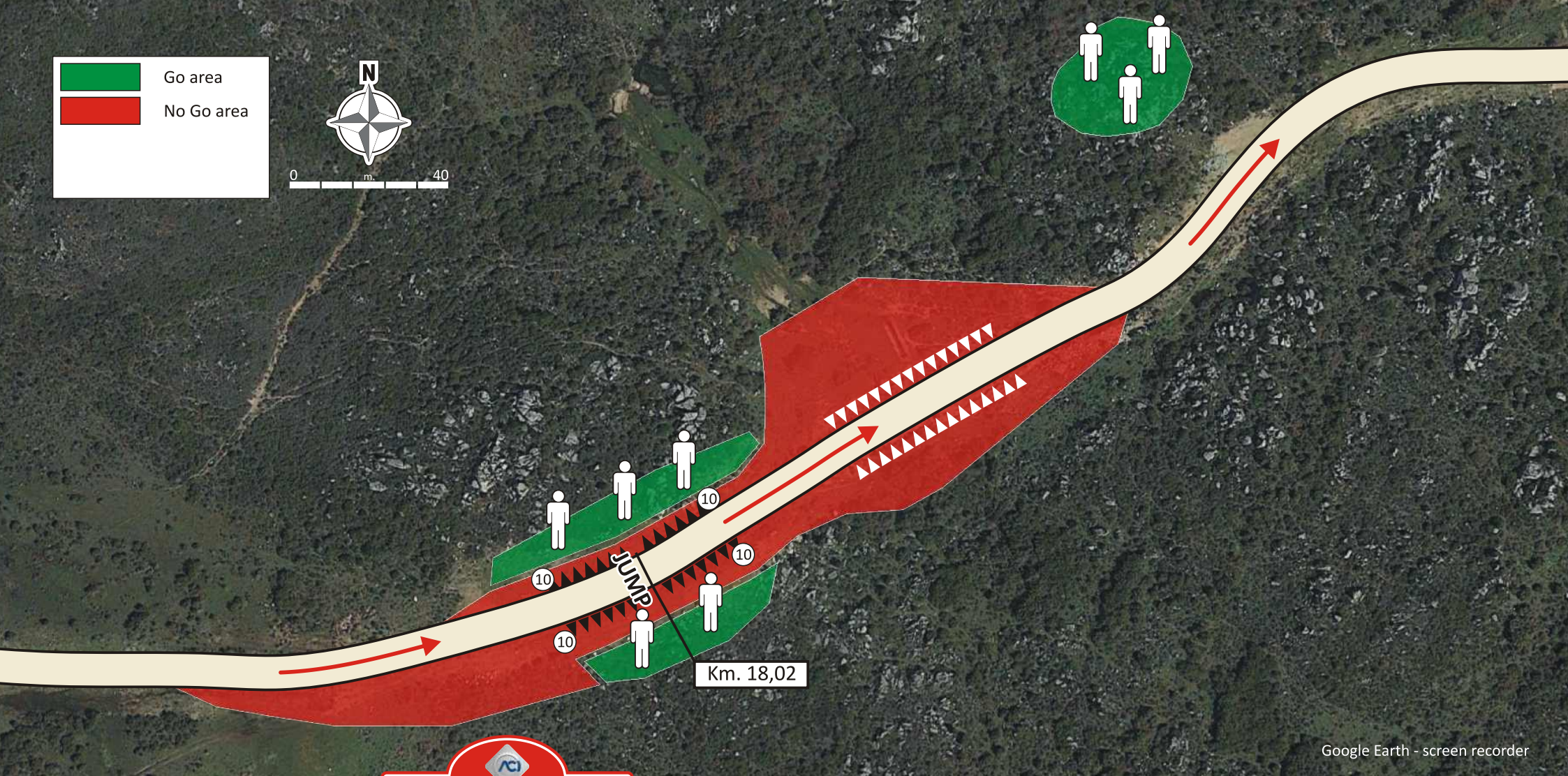


Go area
 No Go area

Km. 12,48

Km. 12,42

 Go area
 No Go area



Google Earth - screen recorder

Day 2 - Saturday, June 13



Monti di Alà SS12-17

Km. 22,49

SS12 - h.08:47 - SS17 h.16:56

Chiusura SS - SS Closing SS12 h. 04:47 - SS17 h. 13:56

Area Spettatori
Spectators

26

Grado d'interesse:
Degree of interest:



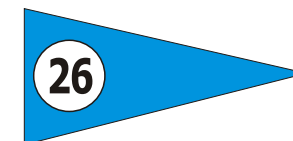
Visibilità:
Visibility:



Accessi:
Accesses:



Cartello indicatore
su strada di accesso:
Access road sign:



Punto di partenza
cartelli indicatori:
Starting point
road signs:

SS389 km. 0,70 da SP10 verso
Buddusò
SS389 km. 0,70 from SP10 to
Buddusò

GPS: 40° 40.267'N - 9° 15.328'E

SENZA INDICAZIONI PROSEGUIRE DRITTI - WITHOUT INDICATIONS GO STRAIGHT

**Monti di Alà
 SS12-17**

Km. 22,49

SS12 - h.08:47 - SS17 h.16:56

Chiusura SS - SS Closing SS12 h. 04:47 - SS17 h. 13:56

Area Spettatori
 Spectators



Grado d'interesse:
 Degree of interest:



Visibilità:
 Visibility:

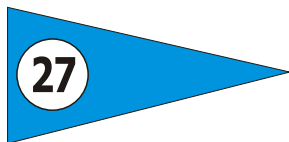


Accessi:
 Accesses:



GPS: **40° 40.248'N - 9° 15.936'E**

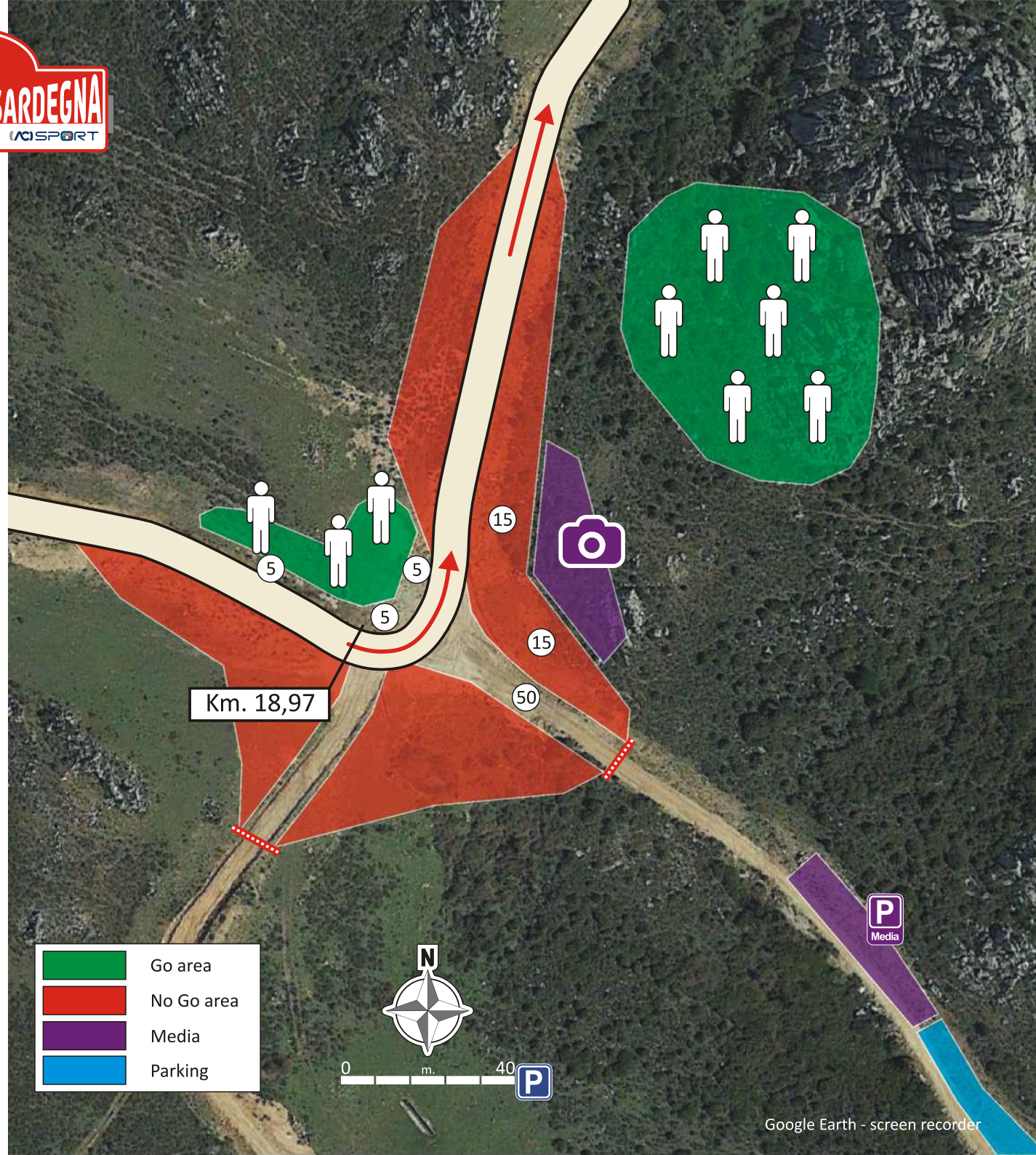
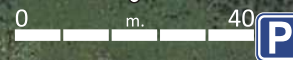
Cartello indicatore
 su strada di accesso:
 Acces road sign:



Punto di partenza
 cartelli indicatori:
 Starting point
 road signs:

Alà dei Sardi SS389 incrocio con
 Via Antonio Segni
 Ala dei Sardi SS389 intersection
 with "Via Antonio Segni"

	Go area
	No Go area
	Media
	Parking



**SENZA INDICAZIONI PROSEGUIRE DRITTI
 WITHOUT INDICATIONS GO STRAIGHT**

Day 2 - Saturday, June 13



Monti di Alà SS12-17

Km. 22,49

SS12 - h.08:47 - SS17 h.16:56

Chiusura SS - SS Closing SS12 h. 04:47 - SS17 h. 13:56

Area Spettatori
Spectators

28

Grado d'interesse:
Degree of interest:



Visibilità:
Visibility:

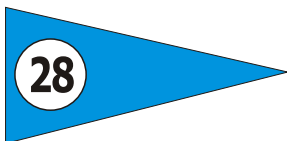


Accessi:
Accesses:



GPS: 40° 40.754'N - 9° 17.443'E

Cartello indicatore
su strada di accesso:
Access road sign:



Punto di partenza
cartelli indicatori:
Starting point
road signs:
SS389 da Alà dei Sardi verso Monti bivio
per Badde Suelzu
SS389 from Ala dei Sardi towards Monti
junction to "Badde Suelzu"

**SENZA INDICAZIONI PROSEGUIRE DRITTI
WITHOUT INDICATIONS GO STRAIGHT**

