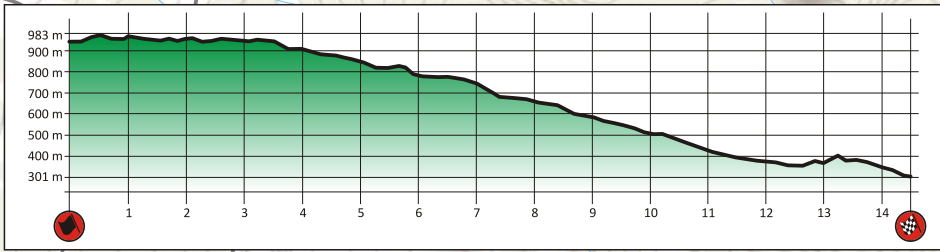


↑ SS 05-S ALGERO

↑ CUGLIERI



↑ SS 03-09

SANTU LUSSURGIU

DAY1 Friday, June 12

Montiferru

SS04-10

Km. 14,41

SS4 h. 10:28

SS10 h. 19:42

Chiusura SS - SS Closing SS4 h. 06:28 - SS10 h. 16:42



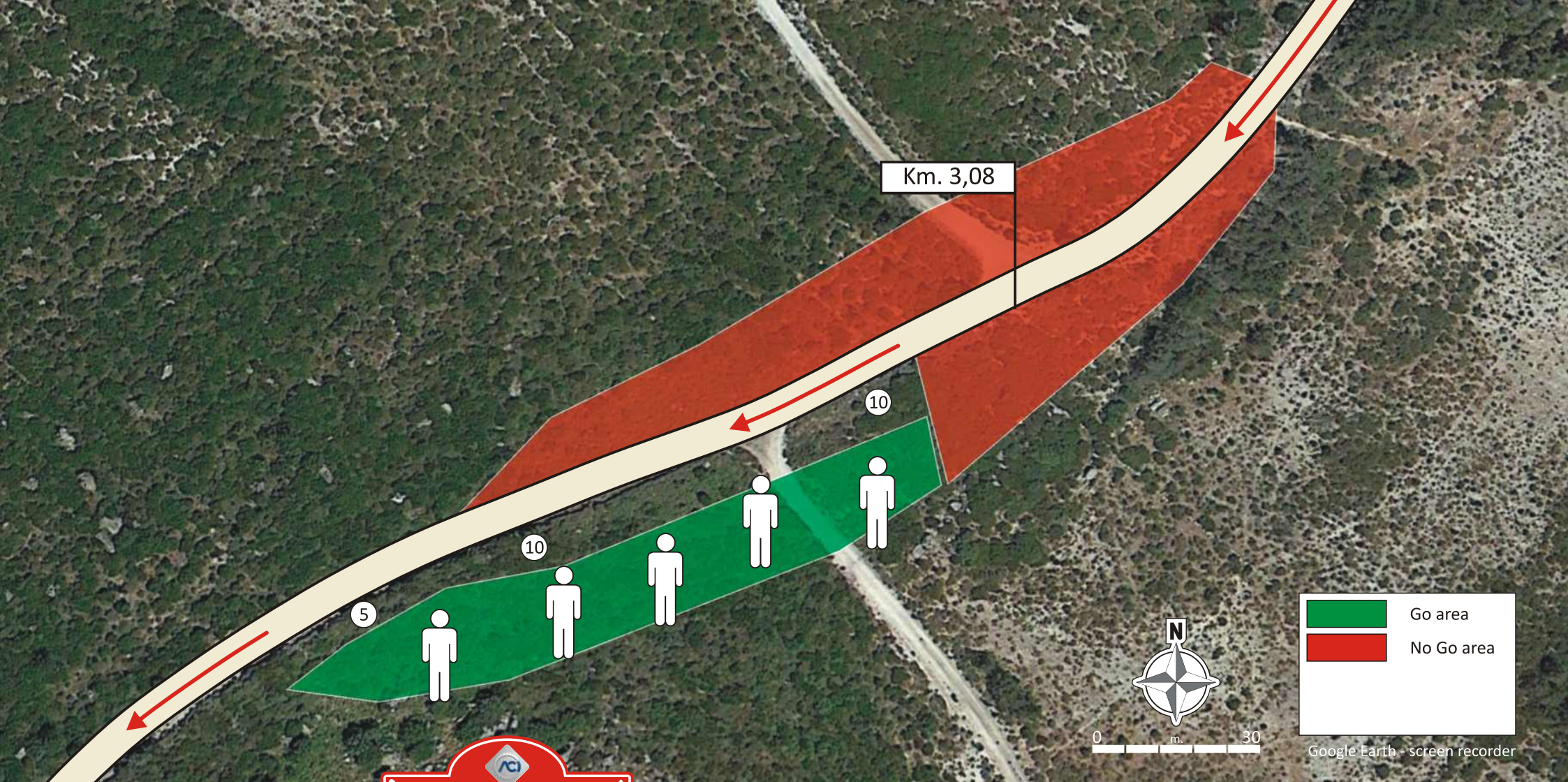
0 Km. Km. 1

Road Section

Special Stage

Spectator Access

Spectator Area



Go area
No Go area

Google Earth - screen recorder

Day 1 - Friday, June 12



Montiferru SS04-10

Km. 14,41

SS4 h.10:28 - SS10 h.19:42

Chiusura SS - SS Closing SS4 h. 06:28 - SS10 h. 16:42

Area Spettatori
Spectators

11

Grado d'interesse:
Degree of interest:



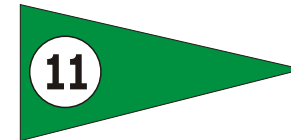
Visibilità:
Visibility:



Accessi:
Accesses:



Cartello indicatore
su strada di accesso:
Acces road sign:



Punto di partenza
cartelli indicatori:
Starting point
road signs:

SP15 km. 4,70 da Santulussurgiu,
km. 1 a piedi dal parcheggio.
SP15 km. 4,70 from Santalussurgiu,
km. 1 to walk from car parking.

GPS: 40° 8.161'N - 8° 36.512'E

SENZA INDICAZIONI PROSEGUIRE DRITTI - WITHOUT INDICATIONS GO STRAIGHT

**Montiferru
SS04-10**

Km. 14,41

SS4 h.10:28 - SS10 h.19:42

Chiusura SS - SS Closing SS4 h. 06:28 - SS10 h. 16:42

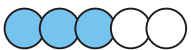
Area Spettatori
Spectators



Grado d'interesse:
Degree of interest:



Visibilità:
Visibility:

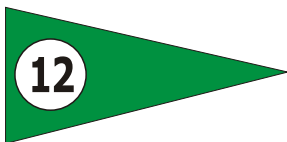


Accessi:
Accesses:



GPS: 40° 7.560'N - 8° 36.095'E

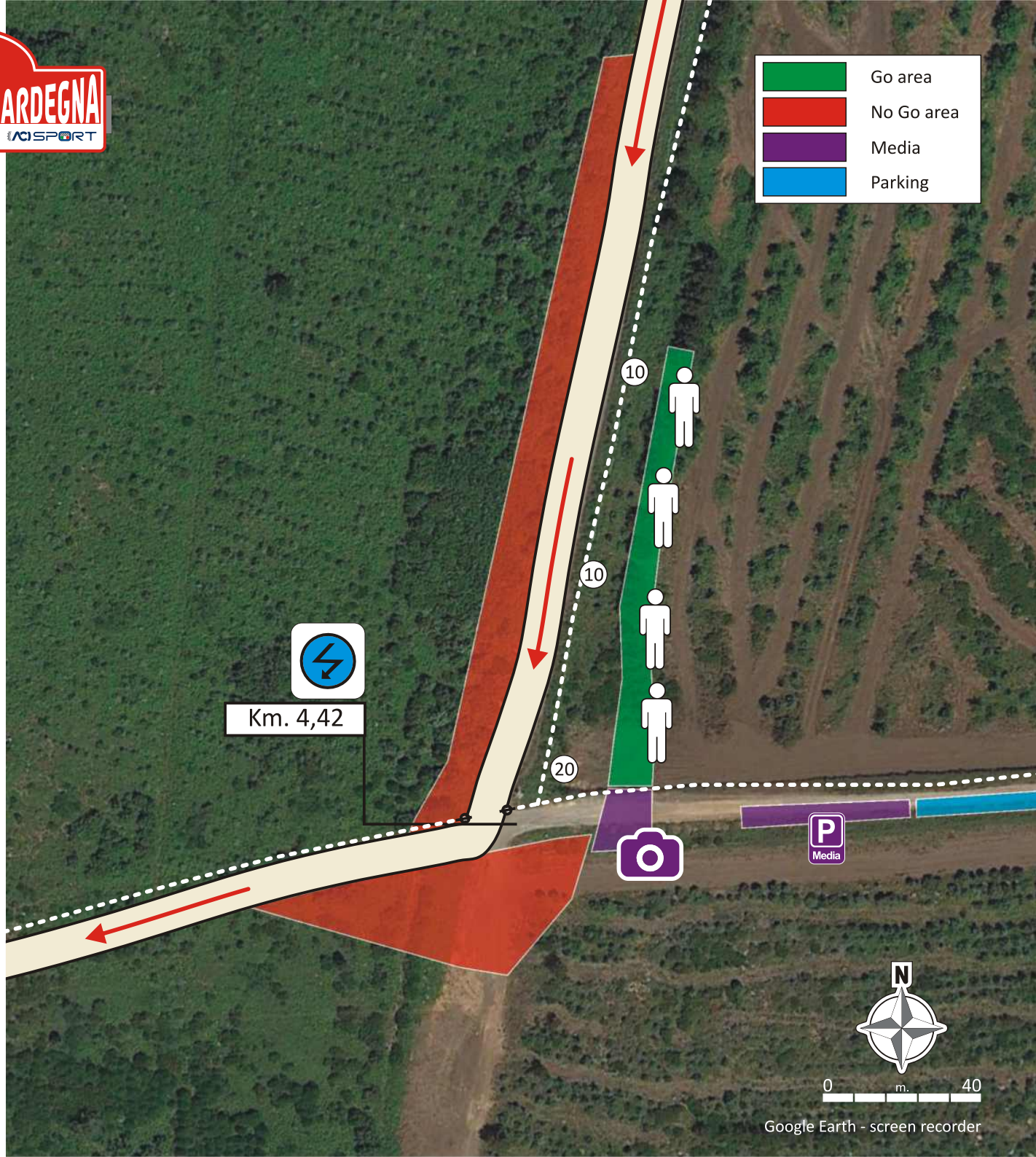
Cartello indicatore
su strada di accesso:
Access road sign:



Punto di partenza
cartelli indicatori:
Starting point
road signs:

SP15 km. 4,70 da Santulussurgiu
SP15 km. 4,70 from Santalussurgiu

	Go area
	No Go area
	Media
	Parking



**SENZA INDICAZIONI PROSEGUIRE DRITTI
WITHOUT INDICATIONS GO STRAIGHT**

Day 1 - Friday, June 12



Montiferru SS04-10

Km. 14,41

SS4 h.10:28 - SS10 h.19:42

Chiusura SS - SS Closing SS4 h. 06:28 - SS10 h. 16:42

Area Spettatori
Spectators

13

Grado d'interesse:
Degree of interest:



Visibilità:
Visibility:

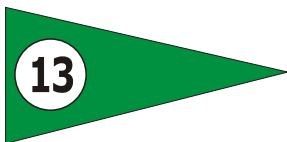


Accessi:
Accesses:



GPS: 40° 7.960'N - 8° 32.006'E

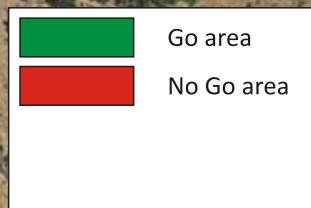
Cartello indicatore
su strada di accesso:
Access road sign:



Punto di partenza
cartelli indicatori:
Starting point
road signs:

SS292 a Santa Caterina di Pitinurri
in direzione via delle Cave - Isola
Ecologica
SS292 at Santa Caterina di Pitinurri
direction Via delle Cave - "Isola
Ecologica"

**SENZA INDICAZIONI PROSEGUIRE DRITTI
WITHOUT INDICATIONS GO STRAIGHT**



0 m. 30

Google Earth - screen recorder

