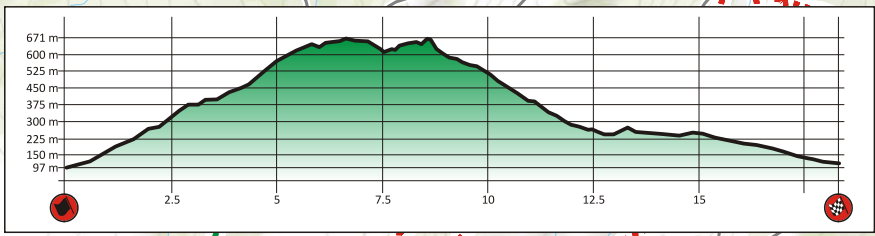
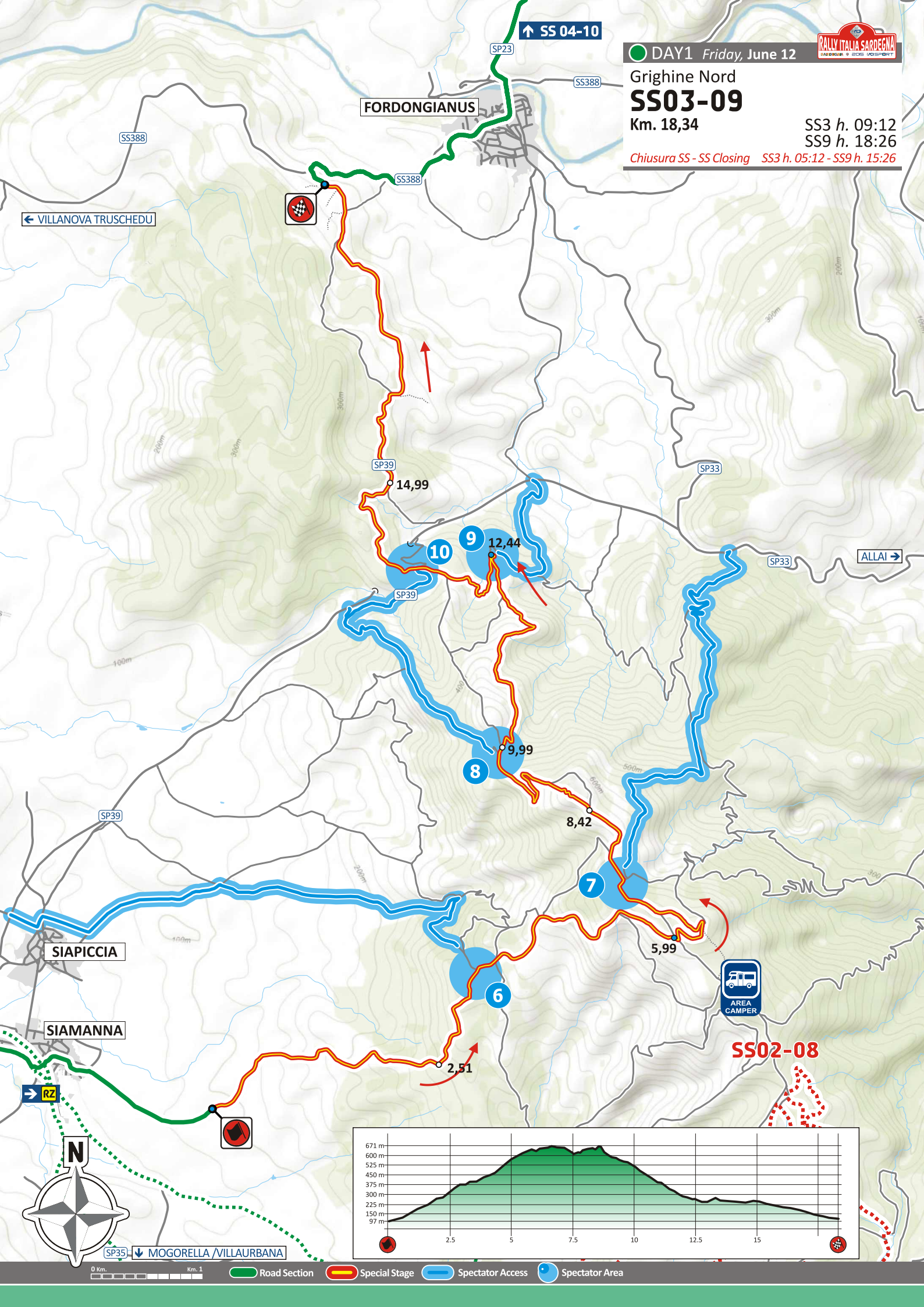


DAY1 Friday, June 12
Grighine Nord
SS03-09
Km. 18,34
SS3 h. 09:12
SS9 h. 18:26
Chiusura SS - SS Closing SS3 h. 05:12 - SS9 h. 15:26



Legend: Road Section (green line), Special Stage (orange line), Spectator Access (blue line), Spectator Area (blue circle)

Day 1 - Friday, June 12

Grighine nord
SS03-09

Km. 18,34

SS3 h.09:12 - SS9 h.18:26

Chiusura SS - SS Closing SS3 h. 05:12 - SS9 h. 15:26

Area Spettatori
 Spectators



Grado d'interesse:
 Degree of interest:



Visibilità:
 Visibility:

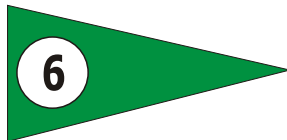


Accessi:
 Accesses:

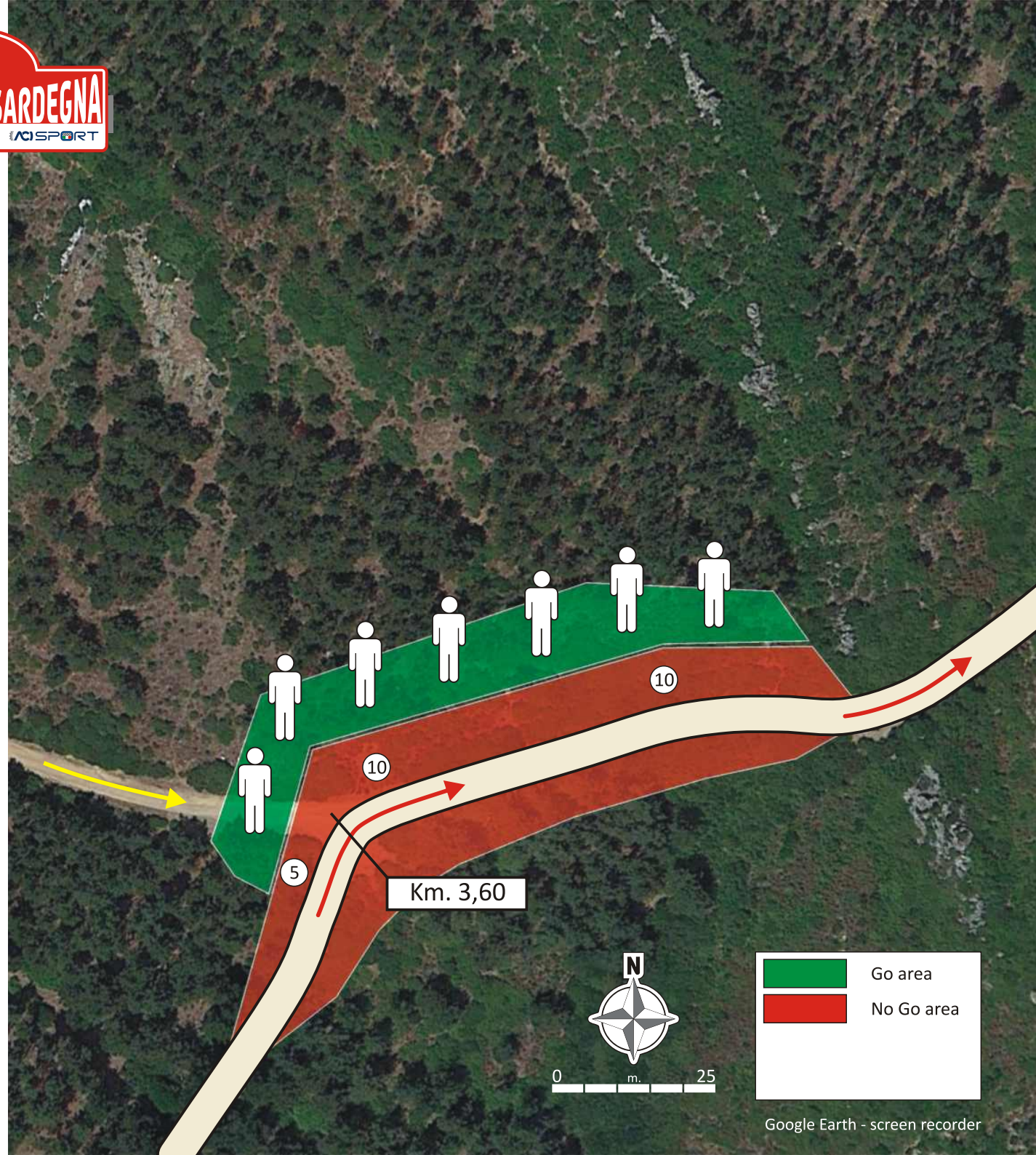


GPS: **39° 55.578'N - 8° 48.503'E**

Cartello indicatore
 su strada di accesso:
 Acces road sign:



Punto di partenza
 cartelli indicatori:
 Starting point
 road signs:
 Da SP68 a SP87 ingresso Siapiccia
 From SP68 to SP87 entrance
 Siapiccia



SENZA INDICAZIONI PROSEGUIRE DRITTI
WITHOUT INDICATIONS GO STRAIGHT

	Go area
	No Go area

Grighine nord
SS03-09

Km. 18,34

SS3 h.09:12 - SS9 h.18:26

Chiusura SS - SS Closing SS3 h. 05:12 - SS9 h. 15:26

Area Spettatori
 Spectators



Grado d'interesse:
 Degree of interest:



Visibilità:
 Visibility:

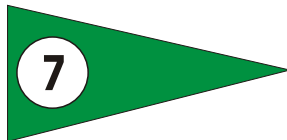


Accessi:
 Accesses:



GPS: **39° 56.006'N - 8° 49.416'E**

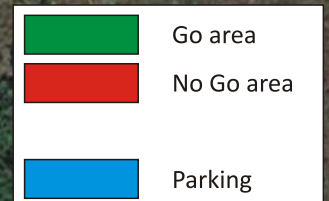
Cartello indicatore
 su strada di accesso:
 Acces road sign:



Punto di partenza
 cartelli indicatori:
 Starting point
 road signs:

SP33 km. 3,60 da Allai
 SP33 km. 3,60 from Allai

SENZA INDICAZIONI PROSEGUIRE DRITTI
WITHOUT INDICATIONS GO STRAIGHT



Day 1 - Friday, June 12

Grighine nord
SS03-09

Km. 18,34

SS3 h.09:12 - SS9 h.18:26

Chiusura SS - SS Closing SS3 h. 05:12 - SS9 h. 15:26

Area Spettatori
 Spectators



Grado d'interesse:
 Degree of interest:



Visibilità:
 Visibility:

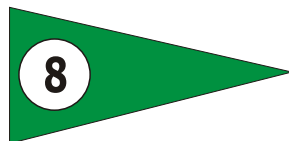


Accessi:
 Accesses:



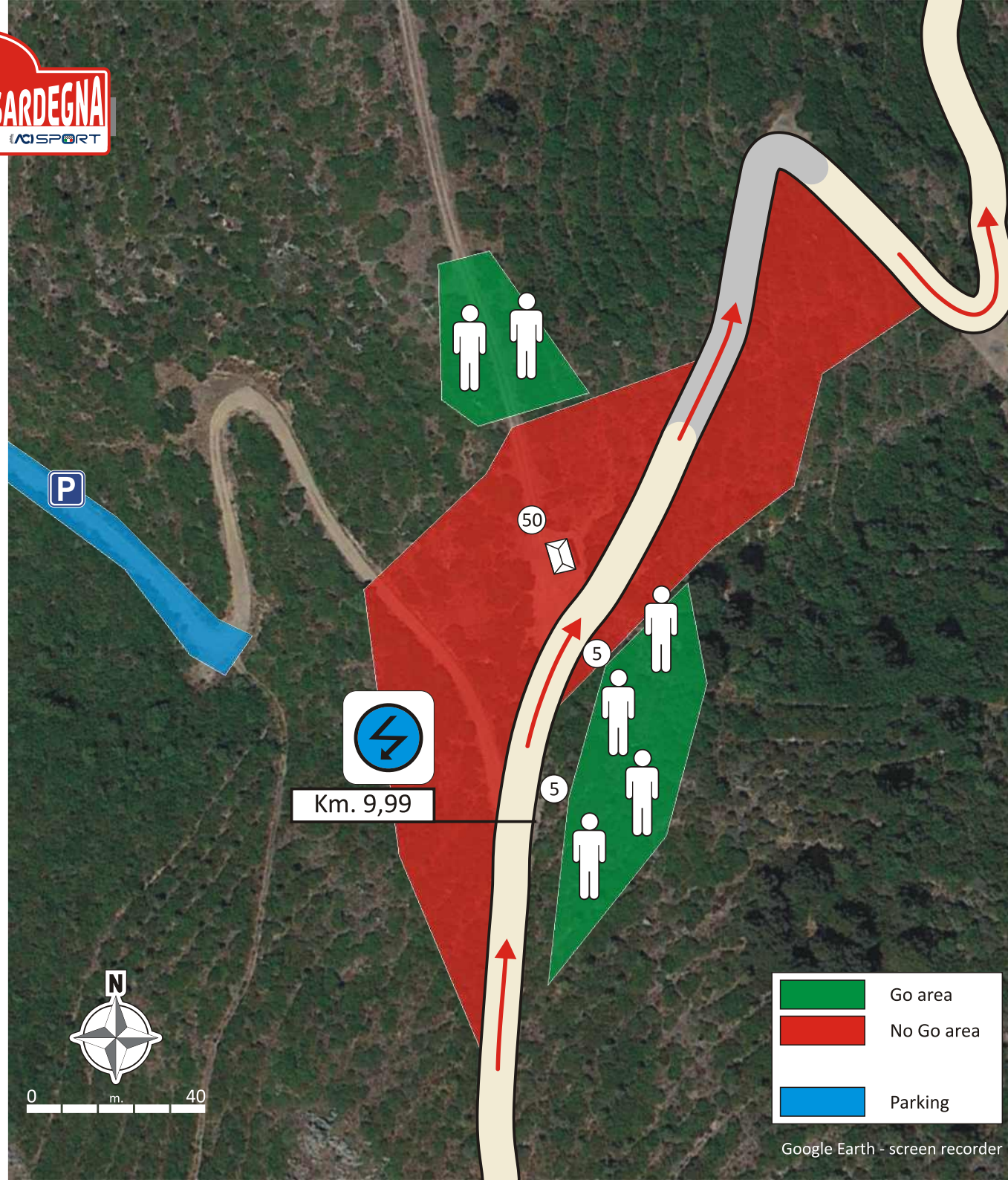
GPS: 39° 56.636'N - 8° 48.636'E

Cartello indicatore
 su strada di accesso:
 Acces road sign:

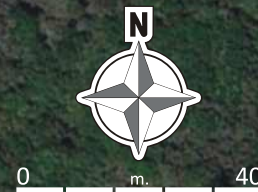


Punto di partenza
 cartelli indicatori:
 Starting point
 road signs:
 SP68 km. 5,80 da rotonda
 Siamanna
 SP68 km. 5.80 from
 roundabout Siamanna

SENZA INDICAZIONI PROSEGUIRE DRITTI
WITHOUT INDICATIONS GO STRAIGHT



	Go area
	No Go area
	Parking



Grighine nord
SS03-09

Km. 18,34

SS3 h.09:12 - SS9 h.18:26

Chiusura SS - SS Closing SS3 h. 05:12 - SS9 h. 15:26

Area Spettatori
 Spectators **9**

Grado d'interesse:
 Degree of interest: ★☆☆☆☆

Visibilità:
 Visibility: ●●○○○

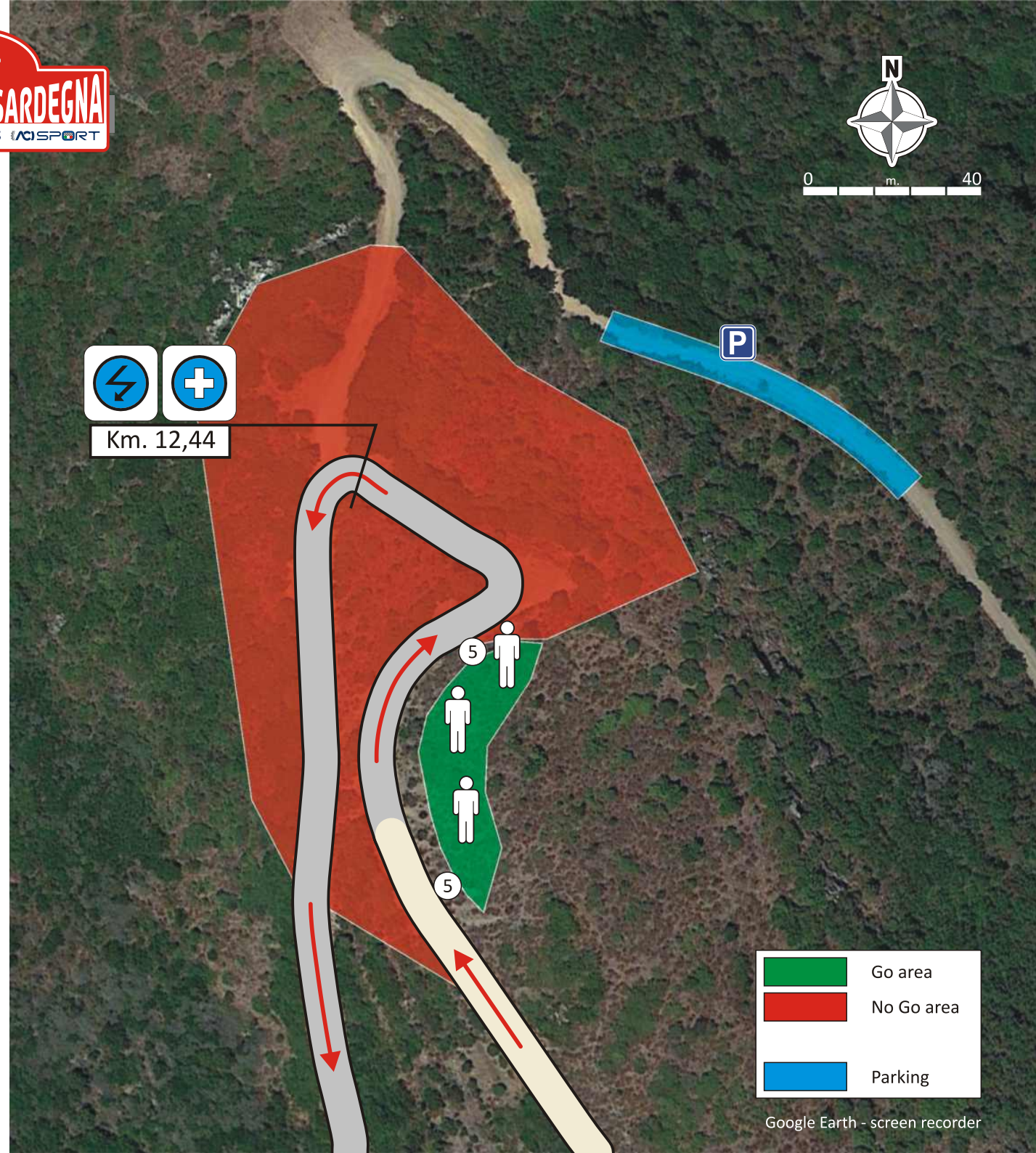
Accessi:
 Accesses: ◆◆◆◇

GPS: **39° 57.594'N - 8° 48.578'E**




Cartello indicatore
 su strada di accesso:
 Acces road sign: **9**

Punto di partenza
 cartelli indicatori:
 Starting point
 road signs: SP33 km. 5,50 da Allai
 SP33 km. 5,50 from Allai

SENZA INDICAZIONI PROSEGUIRE DRITTI
WITHOUT INDICATIONS GO STRAIGHT



	Go area
	No Go area
	Parking

 Go area
 No Go area
 Parking



Google Earth - screen recorder

Day 1 - Friday, June 12



Grighine nord SS03-09

Km. 18,34

SS3 h.09:12 - SS9 h.18:26

Chiusura SS - SS Closing SS3 h. 05:12 - SS9 h. 15:26

Area Spettatori
Spectators

10

Grado d'interesse:
Degree of interest:



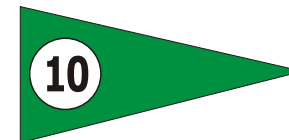
Visibilità:
Visibility:



Accessi:
Accesses:



Cartello indicatore
su strada di accesso:
Access road sign:



Punto di partenza
cartelli indicatori:
Starting point
road signs:

SP68 km. 5,80 da rotonda
Siamanna
SP68 km. 5,80 from roundabout
Siamanna

GPS: 39° 57.520'N - 8° 48.089'E

SENZA INDICAZIONI PROSEGUIRE DRITTI - WITHOUT INDICATIONS GO STRAIGHT