

DAY1 Friday, June 12

Grighine Sud

SS02

Km. 26,31

SS2 h. 08:20

Chiusura SS - SS Closing SS2 h. 04:20 - SS8 h. 14:33



SS03-09

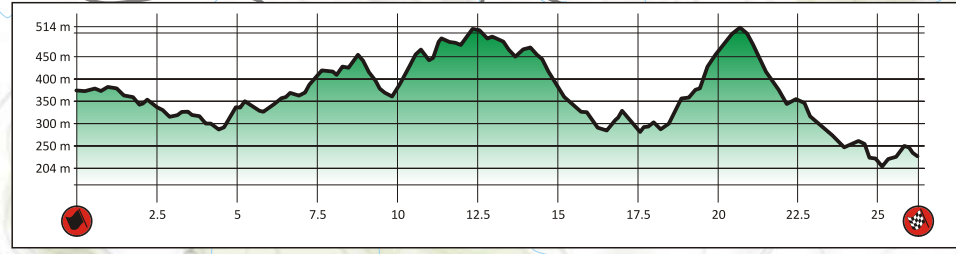
← RZ SIAMANNA

RUINAS

VILLARBANA

SP35

SP36



↓ MOGORELLA/USELLUS

MOGORELLA

↑ CAGLIARI LFZ



- Road Section
- Special Stage
- Spectator Access
- Spectator Area

DAY1 Friday, June 12

Grighine Sud

SS08

Km. 22,45

SS8 h. 17:33

Chiusura SS - SS Closing SS2 h. 04:20 - SS8 h. 14:33



SS03-09

← RZ SIAMANNA

RUINAS

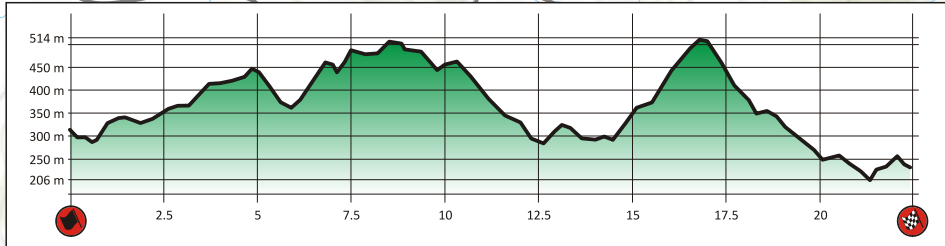
VILLARBANA

↓ RZ

SS08 ONLY

SP36

SP35



↓ MOGORELLA/USELLUS

MOGORELLA

Day 1 - Friday, June 12

**Grighine sud
SS02**

SS2 km. 26,31

h.08:20

Chiusura SS - SS Closing SS2 h. 04:20 - SS8 h. 14:33

Area Spettatori
Spectators



Grado d'interesse:
Degree of interest:



Visibilità:
Visibility:

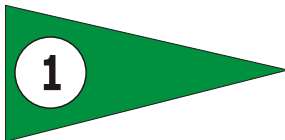


Accessi:
Accesses:



GPS: **39° 52.525'N - 8° 51.647'E**

Cartello indicatore
su strada di accesso:
Access road sign:

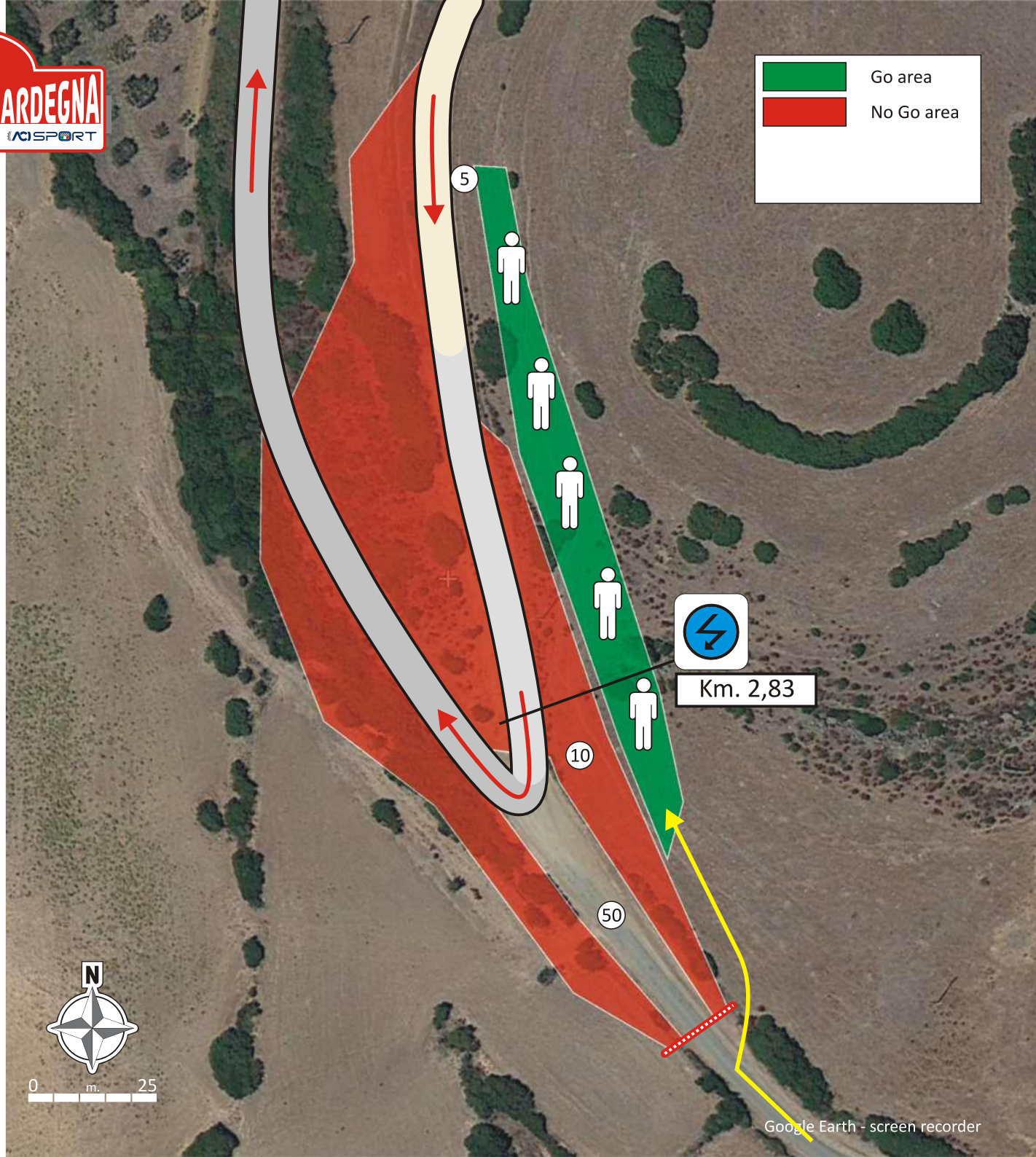


Punto di partenza
cartelli indicatori:
Starting point
road signs:

Parcheggio Auto a Mogorella in Via
Grighini - proseguire a piedi per
km. 1,50

Car Parking at Mogorella in "Via
Grighini" - km. 1,50 to walk

**SENZA INDICAZIONI PROSEGUIRE DRITTI
WITHOUT INDICATIONS GO STRAIGHT**



Grighine sud
SS08

SS8 km. 22,45

h.17:33

Chiusura SS - SS Closing SS2 h. 04:20 - SS8 h. 14:33

Area Spettatori
 Spectators



Grado d'interesse:
 Degree of interest:



Visibilità:
 Visibility:

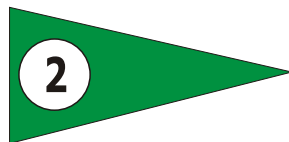


Accessi:
 Accesses:



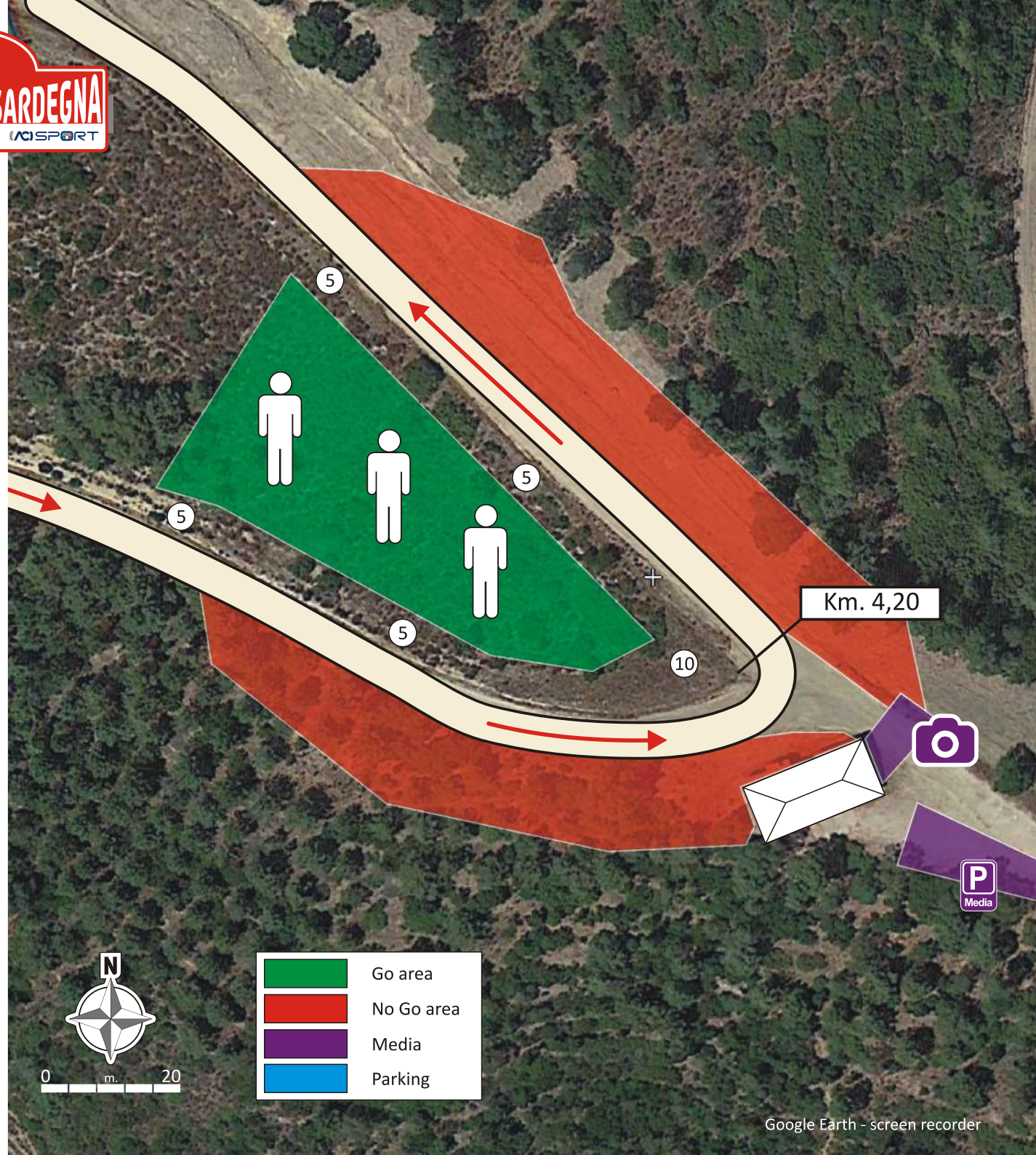
GPS: **39° 53.614'N - 8° 51.606'E**

Cartello indicatore
 su strada di accesso:
 Acces road sign:



Punto di partenza
 cartelli indicatori:
 Starting point
 road signs:

SP 36 km. 3,170 da
 Mogorella
 SP 36 km. 3,170 from
 Mogorella



	Go area
	No Go area
	Media
	Parking

SENZA INDICAZIONI PROSEGUIRE DRITTI
WITHOUT INDICATIONS GO STRAIGHT

Grighine sud SS02-08

SS2 km. 26,31 - h.08:20

SS8 km. 22,45 - h.17:33

Chiusura SS - SS Closing SS2 h. 04:20 - SS8 h. 14:33

Area Spettatori
Spectators



Grado d'interesse:
Degree of interest:



Visibilità:
Visibility:

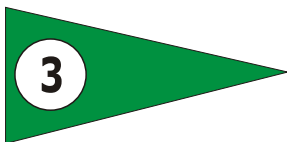


Accessi:
Accesses:



GPS: **39° 54.030'N - 8° 51.023'E**

Cartello indicatore
su strada di accesso:
Access road sign:

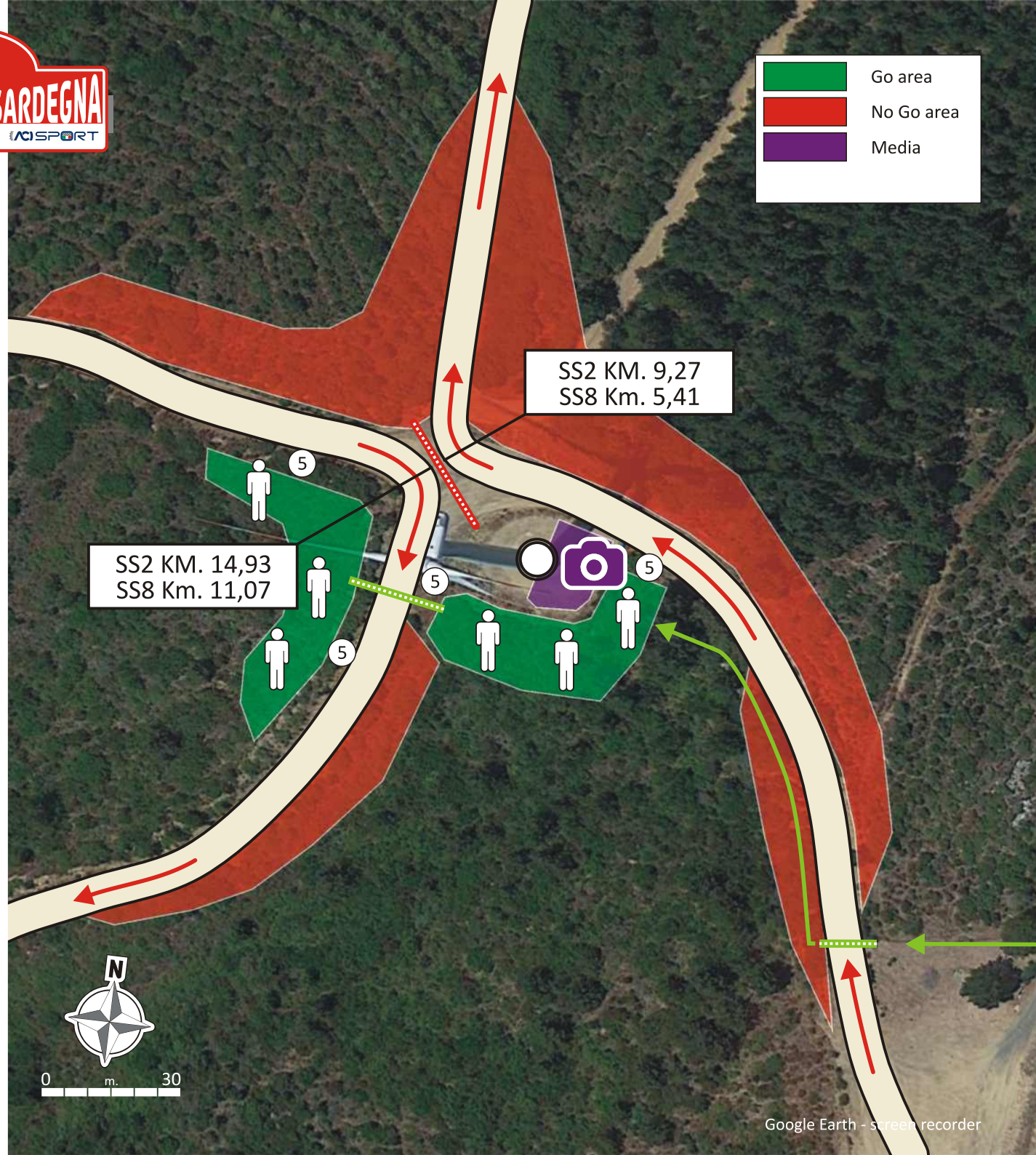
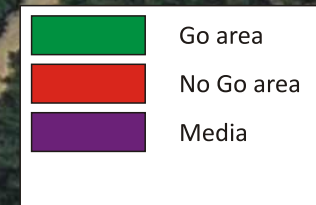


Punto di partenza
cartelli indicatori:
Starting point
road signs:

Ruinas - incrocio SP36 con Via Chiesa
(seguire indicazioni Chiesa San
Teodoro)

Ruina - SP36 junction with "Via
Chiesa" (follow directions to Chiesa
San Teodoro)

SENZA INDICAZIONI PROSEGUIRE DRITTI
WITHOUT INDICATIONS GO STRAIGHT



**Grighine sud
 SS02-08**

SS2 km. 26,31 - h.08:20

SS8 km. 22,45 - h.17:33

Chiusura SS - SS Closing SS2 h. 04:20 - SS8 h. 14:33

Area Spettatori
 Spectators



Grado d'interesse:
 Degree of interest:



Visibilità:
 Visibility:

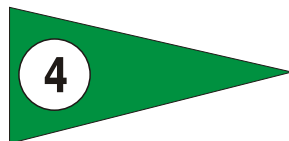


Accessi:
 Accesses:



GPS: **39° 53.771'N - 8° 49.859'E**

Cartello indicatore
 su strada di accesso:
 Acces road sign:

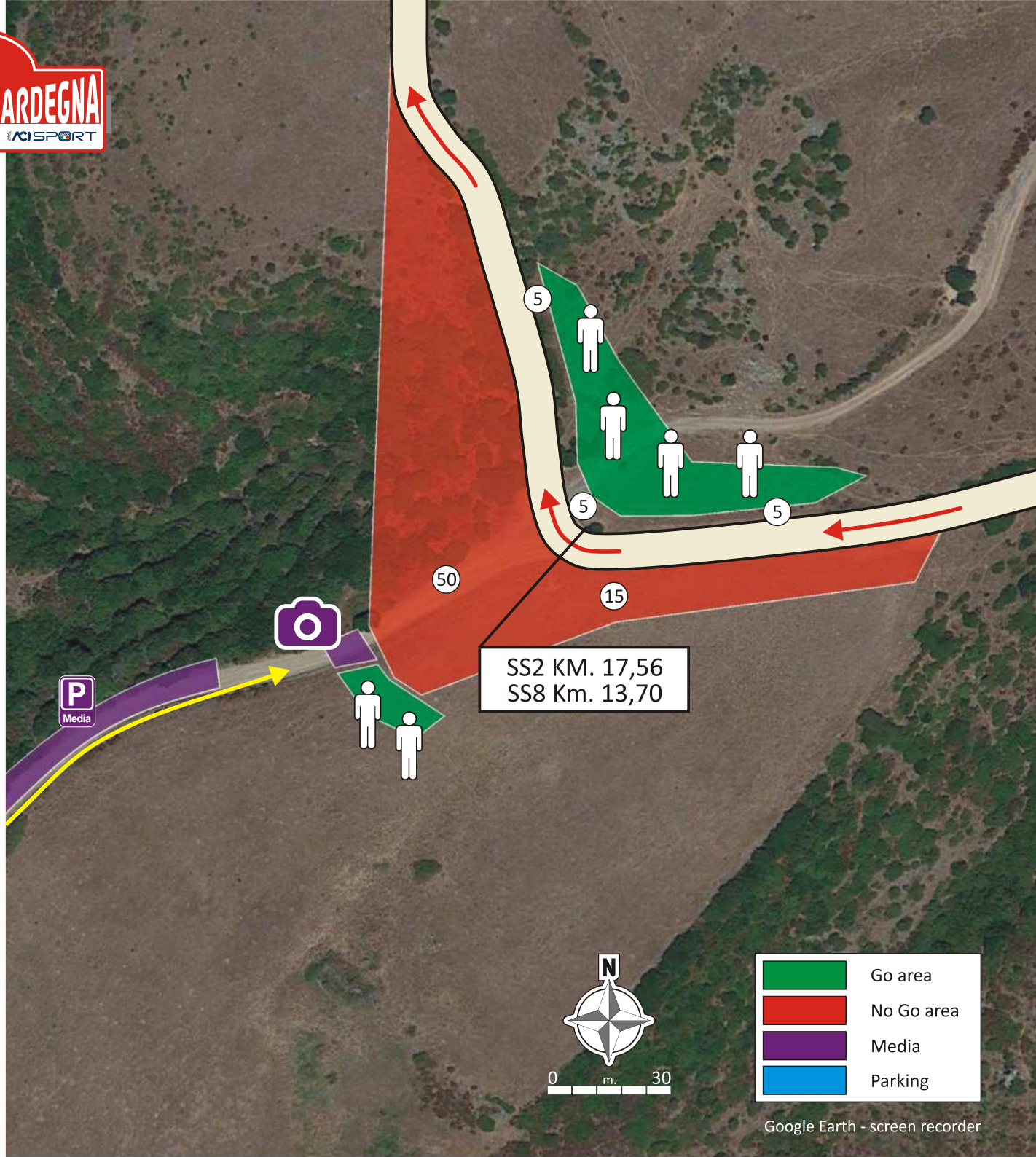


Punto di partenza
 cartelli indicatori:

Starting point
 road signs:

Sp35 incrocio con Circonvallazione
 Villaurbana
 SP35 intersection Bypassing
 Villaurbana

**SENZA INDICAZIONI PROSEGUIRE DRITTI
 WITHOUT INDICATIONS GO STRAIGHT**



	Go area
	No Go area
	Media
	Parking

Grighine sud
SS02-08

SS2 km. 26,31 - h.08:20

SS8 km. 22,45 - h.17:33

Chiusura SS - SS Closing SS2 h. 04:20 - SS8 h. 14:33

Area Spettatori
Spectators



Grado d'interesse:
Degree of interest:



Visibilità:
Visibility:

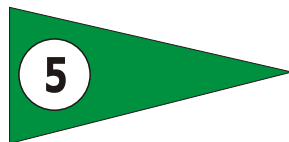


Accessi:
Accesses:



GPS: **39° 54.617'N - 8° 48.883'E**

Cartello indicatore
su strada di accesso:
Access road sign:



Punto di partenza
cartelli indicatori:
Starting point
road signs:

Siamanna incrocio SP35 con
Via Mogonitzi
Siamanna SP35 junction
with "Via Mogonitzi"

SENZA INDICAZIONI PROSEGUIRE DRITTI
WITHOUT INDICATIONS GO STRAIGHT

